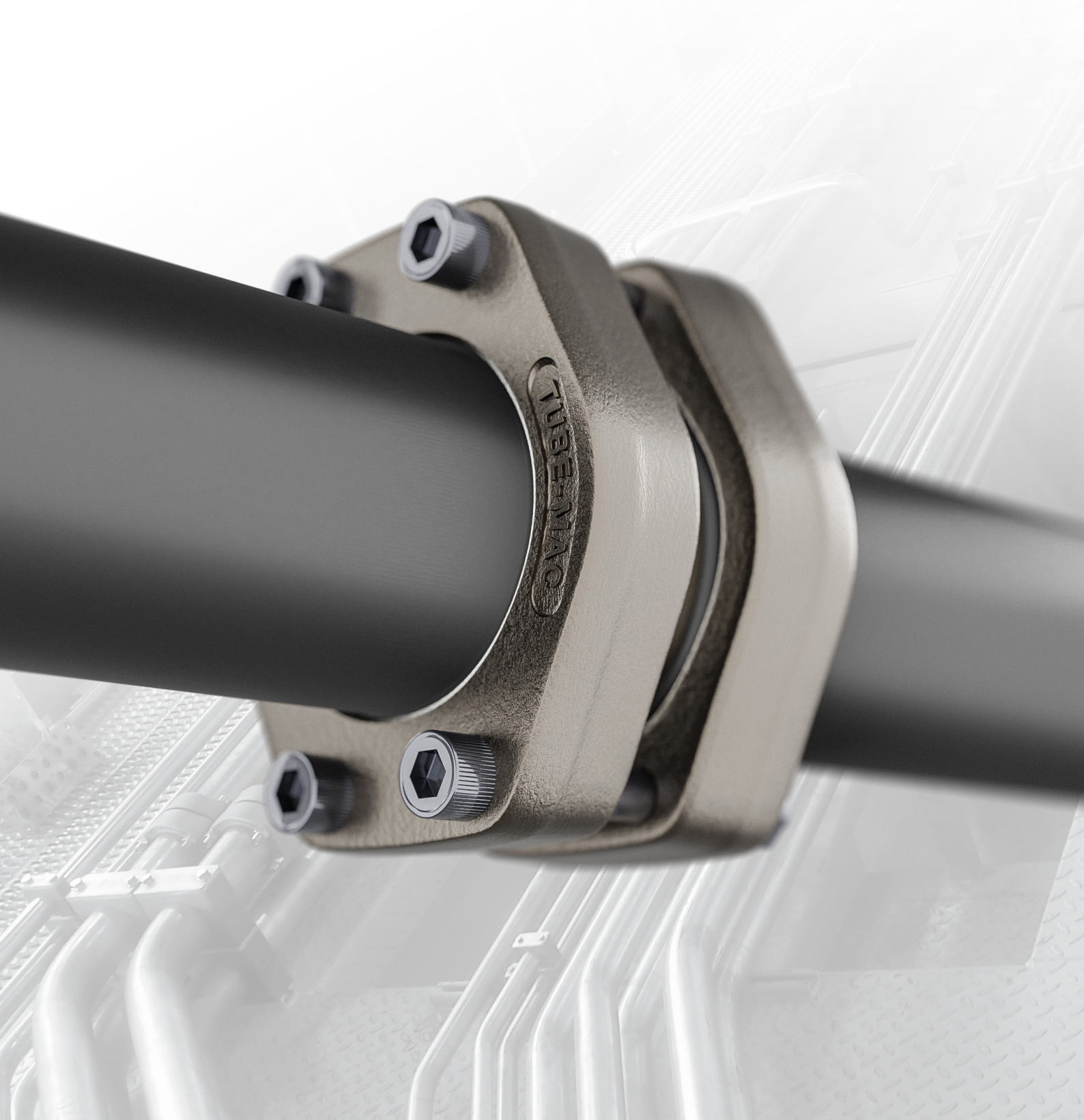


Product Catalogue V.62



tube-mac.com

Non-welded flange piping systems and components

Tube-Mac® Piping Technologies Ltd.
853 Arvin Avenue, Stoney Creek, Ontario, Canada L8E 5N8
T. +1.905.643.8823

CANADA | USA | AUSTRIA | SPAIN

Table of Contents

Introduction	Section A
Technical Data	Section B
Designers Guide and Pipe Selection	Section C
16 bar, 90° Flare	Section D
ANSI 150# and 300# Flare	Section E
SAE 1000, 70 bar	Section F
SAE 3000, 210 bar	Section G
SAE 6000, 420 bar	Section H
SAE 10000, 690 bar	Section I
ISO 6164, 400 bar	Section J
ISO 6164, 400 bar F10° Flare	Section K
Clamp Supports - Heavy Series	Section L
Valves, Ball and Check	Section M

Special Notes

1. Tube-Mac reserves the right to alter the design or discontinue any of the products or services without notice.
2. Diagrams and 3-D Models are not to scale. They are for illustrative purposes only.
3. Dimensions and weights are nominal (not exact) and may be subject to change.
4. The entire catalogue is subject to misprints and errors

Detailed Table Of Contents

Introduction - Section A

Our Company History and Locations	A1
Our Products	A2
Our Services.....	A3

Technical Data - Section B

Flare Flange System and Procedures.....	B1
Retain Flange System and Procedures.....	B5

Pipe Selection and Designers Guide - Section C

Pipes and Tubes	C1
Designers Guide.....	C2
Pipe Flow/Velocity Guide, NPS.....	C3
Pipe Flow/Velocity Guide, Metric.....	C4
Pipe Pressure Rating Guide, NPS.....	C5
Pipe Pressure Rating Guide, Metric.....	C6

16 bar, 90° Flare - Section D

Reference Guide.....	Di
Flare Flange Dimensions, Metric only	D1
Flare Flange Clearance, Metric only	D2

ANSI 150# and 300# Flare - Section E

Reference Guide.....	Ei
ANSI 150# Flare Flange Dimensions, NPS only	E1
ANSI 150# and 300# Flare Flange Clearance, NPS.....	E2
ANSI 150# and 300# Cone Inserts, NPS.....	E3

SAE 1000 PSI, 70 bar - Section F

Reference Guide.....	Fi-Fii
LP Flare Flange Dimensions, NPS and Metric.....	F1
LP Flare Flange Clearance, NPS and Metric	F2
LP Flare Flange Threaded, NPS and Metric	F3
LP Flare Flange Set O-ring Face Cone, NPS	F4
LP Flare Flange Set O-ring Face Cone, Metric	F5
LP Flare Flange Set Flat Face Cone, NPS	F6
LP Flare Flange Set Flat Face Cone, Metric	F7
LP Flare Flange Set Double Cone, NPS.....	F8
LP Flare Flange Set Double Cone, Metric	F9
Cone Inserts, NPS.....	F10
Cone Inserts with Pilot Port, NPS	F11
Cone Inserts, Metric	F12
Cone Inserts with Pilot Port, Metric	F13
LP Retain Ring Flange Dimensions, NPS and Metric.....	F14
LP Retain Ring Flange Clearance, NPS and Metric	F15
LP Butt Weld Adapter, O-ring Face, NPS	F16
LP Butt Weld Adapter, Flat Face, NPS	F17
LP Butt Weld Adapter, O-ring Face, Metric.....	F18
LP Butt Weld Adapter, Flat Face, Metric.....	F19
LP Retain Ring.....	F20
LP O-ring Connector	F21
LP Pilot Tee Between, NPS and Metric	F22
LP Pilot Tee Between, Flat Face, NPS and Metric.....	F23
LP BSPP Female Thread Adapter	F24

Detailed Table Of Contents

LP Flare Flange Pipe Assembly, NPS	F25
LP Flare Flange Pipe Assembly, Metric	F26
LP Flare Flange Bent Pipe Assembly, NPS	F27, F28
LP Flare Flange Bent Pipe Assembly, Metric	F29, F30
LP Retain Ring Flange Pipe Assembly, NPS	F31
LP Retain Ring Flange Pipe Assembly, Metric	F32
LP Retain Ring Flange Bent Assembly Pipe, NPS	F33, F34
LP Retain Ring Flange Bent Assembly Pipe, Metric	F35, F36
LP Retain Ring Flange Elbow	F37
Block Elbow, NPS and Metric	F38
LP Retain Ring Flange Tee	F39
Block Tee, NPS and Metric	F40
Reducing Branch Block Tee, NPS and Metric	F41
Transition Plate Reducer, NPS and Metric	F42
LP Retain Ring Flange Reducer	F43
LP Blanking Flange, O-ring Face, NPS and Metric	F44
LP Blanking Flange, Flat Face, NPS and Metric	F45

SAE 3000 PSI, 210 bar - Section G

Reference Guide	Gi-Giii
Flare Flange Dimensions, NPS and Metric	G1
Flare Flange Clearance, NPS	G2
Flare Flange Clearance, Metric	G3
Flare Flange Threaded, NPS	G4
Flare Flange Threaded, Metric	G5
Flare Flange Reducing Clearance, NPS	G6
Flare Flange Reducing Threaded, NPS	G7
Flare Flange Sets O-ring Face Cone, NPS	G8
Flare Flange Sets O-ring Face Cone, Metric	G9-G10
Flare Flange Sets Flat Face Cone, NPS	G11
Flare Flange Sets Flat Face Cone, Metric	G12-G13
Flare Flange Sets Double Cone, NPS	G14
Flare Flange Sets Double Cone, Metric	G15-G16
Cone Inserts, NPS	G17
Cone Inserts with Pilot Port, NPS	G18
Cone Inserts, Metric	G19-G20
Cone Inserts with Pilot Port, Metric	G21-G22
Cone Reducer O-ring Face Cone, NPS	G23
Cone Reducer Flat Face Cone, NPS	G24
Retain Ring Flange Dimensions, NPS and Metric	G25
Retain Ring Flange Clearance, NPS and Threaded	G26
Retain Ring Flange Threaded, NPS and Metric	G27
Butt Weld Adapter, Bump Style, NPS	G28
Butt Weld Adapter, Bump Style, Metric	G29-G32
Butt Weld Adapter, Retain Ring Style, NPS	G33
Butt Weld Adapter, Retain Ring Style, Metric	G34-G37
BSPP Female Thread Adapter	G38
SAE Male Thread Adapter	G39
NPT Male Thread Adapter	G40
BSPP Male Thread Adapter	G41
SAE Female Thread Flange O-ring Face	G42
SAE Female Thread Flange Flat Face	G43
NPT Female Thread Flange O-ring Face	G44
NPT Female Thread Flange Flat Face	G45
Flare Flange Pipe Assembly, NPS	G46
Flare Flange Pipe Assembly, Metric	G47
Flare Flange Bent Pipe Assembly, NPS	G48-G49
Flare Flange Bent Pipe Assembly, Metric	G50-G51
Flare Flange Bend Elbow, NPS	G52
Flare Flange Bend Elbow, Metric	G53
Retain Ring Flange Bend Elbow	G54

Detailed Table Of Contents

Retain Ring Flange Elbow	G55
Block Elbow, NPS and Metric	G56
Split Flange Elbow, NPS and Metric	G57
Retain Ring Flange Tee	G58
Block Tee, NPS and Metric	G59
Reducing Branch Block Tee, NPS	G60
Reducing Branch Block Tee, Metric	G61
Reducing Branch Block Tee ISO 6164 x Code 61, NPS and Metric	G62
Split Flange Branch Tee, NPS and Metric	G63
Split Flange Run Tee, NPS and Metric	G64
Split Flange Tee, NPS and Metric	G65
Transition Plate Code 62 x Code 61, NPS and Metric	G66
Transition Plate ISO 6164 x Code 61, NPS and Metric	G67
Transition Plate Reducer Code 62 x Code 61, NPS and Metric	G68
Transition Plate Reducer ISO 6164 x Code 61, NPS and Metric	G69
Transition Plate Reducer Code 61 x Code 61, NPS	G70
Transition Plate Reducer Code 61 x Code 61, Metric	G71
Transition Plate Reducer O-ring Face Code 62 x Code 61, NPS and Metric	G72
Transition Plate Reducer O-ring Face ISO 6164 x Code 61, NPS and Metric	G73
Transition Plate Reducer O-ring Face Code 61 x Code 61, NPS	G74
Transition Plate Reducer O-ring Face Code 61 x Code 61, Metric	G75
Adapter Plate Flat Face Code 61 x Code 61, NPS and Metric	G76
O-ring Connector Plate	G77
Connector Plate	G78
Retain Ring	G79
O-ring Spacer	G80
O-ring spacer to Hose End	G81
O-ring Spacer with Pilot Port, NPS and Metric	G82
Retain Ring Flange Bulkhead	G83
Retain Ring Flange Concentric Reducer	G84
Blanking Flanges O-ring Face, NPS and Metric	G85
Blanking Flanges Flat Face, NPS and Metric	G86
Split Flange Kits, NPS and Metric	G87
Split Flange Plugs, NPS and Metric	G88
Non-Conductive Connector Plate	G89
Non-Return Check Valve	G90
Check Valve Performance Curves, PSI - Gal/min	G91
Check Valve Performance Curves, bar - litre/min	G92

SAE 6000 PSI, 420 bar - Section H

Reference Guide	Hi-Hiii
Flare Flange Dimensions, NPS and Metric	H1
Flare Flange Clearance, NPS	H2
Flare Flange Clearance, Metric	H3
Flare Flange Threaded, NPS	H4
Flare Flange Threaded, Metric	H5
Flare Flange Reducing Clearance, NPS	H6
Flare Flange Reducing Threaded, NPS	H7
Flare Flange Sets O-ring Face Cone, NPS	H8
Flare Flange Sets O-ring Face Cone, Metric	H9-H10
Flare Flange Sets Flat Face Cone, NPS	H11
Flare Flange Sets Flat Face Cone, Metric	H12-H13
Flare Flange Sets Double Cone, NPS	H14
Flare Flange Sets Double Cone, Metric	H15-H16
Cone Inserts, NPS	H17
Cone Inserts with Pilot Port, NPS	H18
Cone Inserts, Metric	H19-H20
Cone Inserts with Pilot Port, Metric	H21-H22
Cone Reducer O-ring Face Cone, NPS	H23
Cone Reducer Flat Face Cone, NPS	H24
Retain Ring Flange Dimensions, NPS and Metric	H25
Retain Ring Flange Clearance, NPS and Metric	H26
Retain Ring Flange Threaded, NPS and Metric	H27

Detailed Table Of Contents

Butt Weld Adapter, Bump Style, NPS	H28
Butt Weld Adapter, Bump Style, Metric	H29-H31
Butt Weld Adapter, Retain Ring Style, NPS	H32
Butt Weld Adapter, Retain Ring Style, Metric	H33-H35
SAE Female Thread Flange O-ring Face	H40
SAE Female Thread Flange Flat Face	H41
PT Female Thread Flange O-ring Face	H42
NPT Female Thread Flange Flat Face	H43
Flare Flange Pipe Assembly, NPS	H44
Flare Flange Pipe Assembly, Metric	H45
Flare Flange Bent Pipe Assembly, NPS	H46-H47
Flare Flange Bent Pipe Assembly, Metric	H48-H49
Flare Flange Bend Elbow, NPS	H50
Flare Flange Bend Elbow, Metric	H51
Retain Ring Flange Bend Elbow	H52
Retain Ring Flange Elbow	H53
Block Elbow, NPS and Metric	H54
Split Flange Elbow, NPS and Metric	H55
Retain Ring Flange Tee	H56
Block Tee, NPS and Metric	H57
Reducing Branch Block Tee, NPS	H58
Reducing Branch Block Tee, Metric	H59
Reducing Branch Block Tee ISO 6164 x Code 61, NPS and Metric	H60
Split Flange Branch Tee, NPS and Metric	H61
Split Flange Run Tee, NPS and Metric	H62
Split Flange Tee, NPS and Metric	H63
Transition Plate O-ring Face Code 62 x Code 61, NPS and Metric	H64
Transition Plate Reducer Code 62 x Code 61, NPS and Metric	H65
Transition Plate ISO 6164 x Code 62, NPS and Metric	H66
Transition Plate Reducer Code 62 x Code 62, NPS and Metric	H67
Transition Plate Reducer O-ring Face Code 62 x Code 61, NPS and Metric	H68
Transition Plate Reducer O-ring Face ISO 6164 x Code 62, NPS and Metric	H69
Transition Plate Reducer O-ring Face Code 62 x Code 62, NPS	H70
Adapter Plate Flat Face Code 62 x Code 62, NPS and Metric	H71
O-ring Connector Plate	H72
Connector Plate	H73
Retain Ring	H74
O-ring Spacer	H75
O-ring spacer to Hose End	H76
O-ring Spacer with Pilot Port, NPS and Metric	H77
Retain Ring Flange Bulkhead	H78
Retain Ring Flange Concentric Reducer	H79
Blanking Flanges O-ring Face, NPS and Metric	H80
Blanking Flanges Flat Face, NPS and Metric	H81
Split Flange Kits, NPS and Metric	H82
Split Flange Plugs, NPS and Metric	H83
Non-Conductive Connector Plate	H84
Non-Return Check Valve	H85
Check Valve Performance Curves, PSI - Gal/min	H86
Check Valve Performance Curves, bar - litre/min	H87

SAE 10000 PSI, 690 bar - Section I

Reference Guide	li
Retain Ring Flange Dimensions, NPS	11
Retain Ring Flange Clearance, NPS	12
Retain Ring Flange Threaded, NPS	13
Retain Ring	14
O-ring Spacer, NPS Pipe	15
O-ring spacer to Hose End	16
O-ring Spacer with Pilot Port, NPS	17
Butt Weld Adapter, Bump Style, NPS	18

Detailed Table Of Contents

Butt Weld Adapter, Retain Ring Style, NPS.....	19
Retain Ring Flange Pipe Assembly, NPS.....	110
Retain Ring Flange Bent Pipe Assembly, NPS.....	111
Block Elbow, NPS.....	112
Block Tee, NPS.....	113
Reducing Branch Block Tee, NPS.....	114
Reducing Branch Block Tee, Metric.....	115
Blanking Flanges O-ring Face, NPS.....	116
Blanking Flanges Flat Face, NPS.....	117

ISO 6164, 400 bar, 5800 PSI - Section J

Reference Guide.....	Ji-Jiii
Flare Flange Dimensions, NPS.....	J1
Flare Flange Dimensions, Metric.....	J2
Flare Flange Clearance, NPS and Metric.....	J3
Flare Flange Set, O-ring Face Cone, NPS and Metric.....	J4
Flare Flange Set, Flat Face Cone, NPS and Metric.....	J5
Flare Flange Set, Double Cone, NPS and Metric.....	J6
Cone Inserts, NPS and Metric.....	J7
Retain Ring Flange Dimensions, NPS.....	J8
Retain Ring Flange Dimensions, Metric.....	J9
Retain Ring Flange Clearance, Grooved NPS Pipe.....	J10
Retain Ring Flange Clearance, Grooved Metric Pipe.....	J11
Retain Ring.....	J12
O-ring Spacer, NPS Pipe.....	J13
O-ring Spacer, Metric Pipe.....	J14
O-ring spacer to Hose End.....	J15
O-ring Spacer with Pilot Port, NPS.....	J16
O-ring Spacer with Pilot Port, Metric.....	J17
Butt Weld Adapter, Bump Style, NPS.....	J18
Butt Weld Adapter, Bump Style, Metric.....	J19
Butt Weld Adapter, Retain Ring Style, NPS.....	J20
Butt Weld Adapter, Retain Ring Style, Metric.....	J21
BSPP Female Thread Adapter.....	J22
SAE Male Thread Adapter.....	J23
NPT Male Thread Adapter.....	J24
BSPP Male Thread Adapter.....	J25
Flare Flange Pipe Assembly, NPS.....	J26
Flare Flange Pipe Assembly, Metric.....	J27
Flare Flange Bent Pipe Assembly, NPS.....	J28-J29
Flare Flange Bent Pipe Assembly, Metric.....	J30-J31
Flare Flange Bend Elbow, NPS.....	J32
Flare Flange Bend Elbow, Metric.....	J33
Retain Ring Flange Pipe Assembly, NPS.....	J34
Retain Ring Flange Pipe Assembly, Metric.....	J35
Retain Ring Flange Bent Pipe, NPS.....	J36
Retain Ring Flange Bent Pipe, Metric.....	J37
Retain Ring Flange Bend Elbow.....	J38
Retain Ring Flange Elbow.....	J39
Block Elbow, NPS and Metric.....	J40
Block Elbow TMI 8-Bolt, NPS and Metric.....	J41
Retain Ring Elbow, NPS and Metric.....	J42
Retain Ring Flange Tee.....	J43
Block Tee, NPS and Metric.....	J44
Block Tee TMI 8-Bolt, NPS and Metric.....	J45
Reducing Branch Block Tee, NPS and Metric.....	J46
Reducing Branch Block Tee ISO 6164 x Code 61, NPS and Metric.....	J47
Reducing Branch Block Tee ISO 6164 x Code 62, NPS and Metric.....	J48
Reducing Branch Block Tee TMI 8-Bolt, NPS and Metric.....	J49
Reducing Branch Block Tee TMI 8-Bolt x ISO 6164, NPS and Metric.....	J50
Retain Ring Flange Tee, NPS and Metric.....	J51

Detailed Table Of Contents

Retain Ring Flange Branch Tee, NPS and Metric.....	J52
Retain Ring Flange Run Tee, NPS and Metric	J53
Transition Plate Reducer, NPS and Metric	J54
Transition Plate Reducer O-ring Face, NPS and Metric	J55
Transition Plate Reducer TMI 8-Bolt, NPS and Metric	J56
Transition Plate Reducer TMI 8-Bolt O-ring Face, NPS and Metric	J57
Transition Plate Reducer ISO 6164 x Code 61, NPS and Metric	J58
Transition Plate Reducer ISO 6164 x Code 61, O-ring Face, NPS and Metric.....	J59
Transition Plate Reducer ISO 6164 x Code 62, NPS and Metric	J60
Transition Plate Reducer ISO 6164 x Code 62, O-ring Face, NPS and Metric.....	J61
Transition Plate Reducer TMI 8-Bolt x ISO 6164, NPS and Metric	J62
Transition Plate Reducer TMI 8-Bolt x ISO 6164, O-ring Face, NPS and Metric	J63
Transition Plate Reducer TMI 12 x 8-Bolt, NPS and Metric	J64
Transition Plate Reducer TMI 12 x 8-Bolt, O-ring Face, NPS and Metric.....	J65
Adapter Plate, NPS and Metric.....	J66
Retain Ring Flange Bulkhead.....	J67
Retain Ring Flange Concentric Reducer	J68
O-ring Connector Plate	J69
Blanking Flanges O-ring Face, NPS and Metric	J70
Blanking Flanges Flat Face, NPS and Metric	J71
Blanking Flanges TMI 8-Bolt O-ring Face, NPS and Metric	J72
Blanking Flanges TMI 8-Bolt Flat Face, NPS and Metric	J73
Non-Return Check Valve.....	J74
Check Valve Performance Curves	J75

ISO 6164, 400 bar F10° Flare - Section K

Reference Guide.....	Ki
F10 Flare Flange Dimensions, NPS.....	K1
F10 Flare Flange Dimensions, Metric.....	K2
F10 Flare Flange Clearance, NPS and Metric	K3
F10 Cone Inserts, NPS and Metric	K4

Clamp Supports – Heavy Series - Section L

Reference Guide.....	Li
Clamp Body.....	L1, L2
Clamp Body, Type H, Smooth Inside	L3
Clamp Body, Type RI, Rubber Insert	L4
Weld Plates	L5
Elongated Weld Plates	L6
Rail Nuts and Mounting Rail.....	L7
Channel Rail Adapter, Type CRA.....	L8
Cover Plates.....	L9
Hex Bolts and Socket Cap Bolts.....	L10
Safety Washer	L11
Safety Plate, Type SIP and Stacking Bolt, Type AF	L12
Clamp Assembly Ordering Code.....	L13, L14
Clamp Assemblies, Order Examples.....	L15, L16
Installation and Distance between Clamps.....	L17
Tightening Torques and Max Loads.....	L18
Pipe and Clamp Spacing.....	L19
Clamp Stacking, Dimensions and Weights	L20

Detailed Table Of Contents

Valves, Ball and Check - Section M

Reference Guide.....	Mi
Block Body Ball Valve BBV-2 Order Codes.....	M1
Female BSP and NPT Thread Block Body BBV-2	M2
Female SAE and ORFS Thread Block Body BBV-2	M3
Forged Body Ball Valve FBV-2 Order Codes.....	M4
Female BSP and NPT Thread Forged Body FBV-2.....	M5
Female SAE and ORFS Thread Forged Body FBV-2.....	M6
Block Body Ball Valve BBV-2-F Order Codes	M7
3000 PSI Split Flange Block Body BBV-2-F3	M8
6000 PSI Split Flange Block Body BBV-2-F6	M8
Forged Body Ball Valve FBV-2-F Order Codes.....	M9
3000 PSI Split Flange Forged Body FBV-2-F3	M10
6000 PSI Split Flange Forged Body FBV-2-F6	M10
Round Body Flat Face Ball Valve BV-2-C36 Order Codes	M11
Dual Pattern 3000/6000 PSI Round Body Flat Face BV-2-C36.....	M12
Round Body Flat Face Ball Valve BV-2-ISO Order Codes.....	M13
ISO 6164 Round Body Flat Face BV-2-ISO	M14
Levers/Handles	M15
Locking Devices	M16,M17,M18
Actuators and Limit Switches	M19
Low Pressure Female NPT and SAE Thread Ball Valve 2BVL.....	M20
Check Valve Inline Female Thread 3C/6C (3000 PSI/6000 PSI)	M21
Check Valve Pressure Drop Charts 3C/6C (3000 PSI/6000 PSI)	M22
Check Valve Retain Ring Body Only CV	M23
Check Valve Assembly Retain Ring Flange Style A/CV	M24
Check Valve Performance Curves PSI – Gal/min	M25
Check Valve Performance Curves bar – Litre/min	M26

