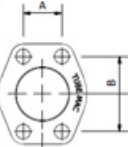

















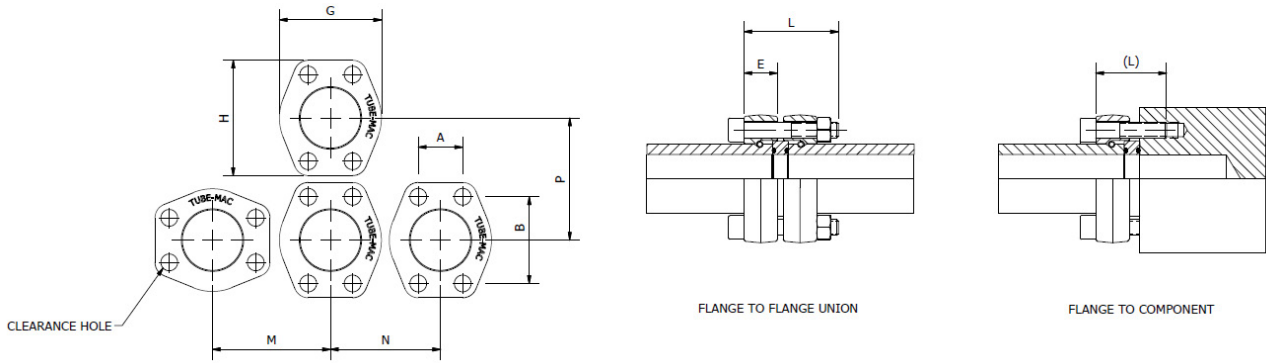
SAE 10000 PSI, 690 bar Reference Guide

(only available for SCHXXS NPS Duplex Pipe)

					
<p>Retain Ring Flange Dimensions</p> <p>Page I1</p>	<p>Retain Ring Flange Clearance Holes NPS RFAC204 Page I2</p>	<p>Retain Ring Flange Threaded Holes NPS RFAT1-4 Page I3</p>	<p>Retain Ring RA Page I4</p>	<p>O-Ring Spacer RR Pipe Flange Connection OS Page I5</p>	<p>O-Ring Spacer RR Pipe to Hose End OSH Page I6</p>
					
<p>O-Ring Spacer With Pilot Port NPS, Metric OSP, OSPM Page I7</p>	<p>Bump Style Butt Weld Adapter Assembly, NPS A/BWAHP Page I8</p>	<p>Retain Ring Style Butt Weld Adapter Assembly, NPS A/BWARHP Page I9</p>	<p>Retain Ring Flange Pipe Assembly SCHXXS Duplex Pipe PAR Page I10</p>	<p>Retain Ring Flange Bent Pipe Assembly SCHXXS Duplex Pipe BPAR Page I11</p>	<p>Block Elbow NPS, Metric BE104, BEM104 Page I12</p>
					
<p>Block Tee NPS, Metric BT104, BTM104 Page I13</p>	<p>Reducing Branch Block Tee NPS BTR104 Page I14</p>	<p>Reducing Branch Block Tee Metric BTRM104 Page I15</p>	<p>Blanking Flange O-Ring Face with Clearance Holes BR0104, BF0104M Page I16</p>	<p>Blanking Flange Flat Face with Threaded Holes BFF104, BFFM104 Page I17</p>	

SAE 10000 PSI Retain Ring Flange Dimensions

SAE J518 Code 62 (ISO 6162-2) Bolt Pattern



Retain Ring Flange Dimensions (Inches)

Size	Dimensions (in)								SHCS Bolt (in)* L (L)	Working Pressure PSI (Bar)
	A	B	G	H	M	N	P	E		
1/2"	0.72	1.59	1.88	2.22	2.20	2.09	2.32	1.20	5/16"-18 UNC x 3.00 (2.00)	10000 (690)
3/4"	0.94	2.00	2.38	2.81	2.76	2.17	2.95	1.40	3/8"-16 UNC x 3.50 (2.25)	10000 (690)
1"	1.09	2.25	2.75	3.19	3.19	2.44	3.35	1.40	7/16"-14 UNC x 3.50 (2.25)	10000 (690)
1-1/4"	1.25	2.63	3.06	3.75	3.58	2.99	3.90	1.60	1/2"-13 UNC x 4.00 (2.50)	10000 (690)
1-1/2"	1.44	3.13	3.75	4.44	4.25	3.35	4.57	1.60	5/8"-11 UNC x 4.50 (2.75)	10000 (690)
2"	1.75	3.81	3.81	5.25	5.04	3.94	5.39	2.40	3/4"-10 UNC x 6.00 (3.50)	10000 (690)
2-1/2"	2.31	4.87	4.87	6.89	6.65	4.37	7.20	2.40	1"-8 UNC x 6.75 (4.38)	10000 (690)
3"	2.81	6.00	6.00	8.50	8.00	5.24	8.58	2.75	1-1/8"-7 UNC x 7.50 (5.00)	10000 (690)

* SHCS Bolt Specification

Carbon Steel: ASTM A574

316 Stainless Steel: ASTM A193 - B8M

- For 5/8" SS Bolts and smaller ASTM A193 - B8M Class.1
- For 3/4" SS Bolts and larger ASTM A193 - B8M Class.2

Retain Ring Flange Dimensions (Millimeters)

Size	Dimensions (mm)								SHCS Bolt* L (L)	Working Pressure PSI (Bar)
	A	B	G	H	M	N	P	E		
1/2"	18.3	40.4	47.8	56.4	55.9	53.1	58.9	30	M8 x 80 (50)	10000 (690)
3/4"	23.9	50.8	60.5	71.4	70.1	68.1	74.9	35	M10 x 90 (60)	10000 (690)
1"	27.7	57.2	69.9	81.0	81.0	75.9	85.1	35	M12 x 90 (60)	10000 (690)
1-1/4"	31.8	66.8	77.7	95.3	90.9	83.1	99.1	40	M12 x 100 (65)	10000 (690)
1-1/4" ⁽²⁾	31.8	66.8	77.7	95.3	90.9	83.1	99.1	40	M14 x 100 (65)	10000 (690)
1-1/2"	36.6	79.5	95.3	112.8	108.0	101.1	116.1	40	M16 x 115 (70)	10000 (690)
2"	44.5	96.8	114.3	133.4	128.0	119.9	136.9	60	M20 x 150 (90)	10000 (690)
2-1/2"	58.7	123.8	150.0	175.0	169.0	156.0	183.0	60	M24 x 170 (110)	10000 (690)
3"	71.4	152.4	178.0	215.0	202.0	184.0	218.0	70	M30 x 190 (130)	10000 (690)

⁽²⁾ Designates special order to suit M14 bolts

* SHCS Bolt Specification

Carbon Steel: DIN 912/ISO 476, Minimum Grade 8.8

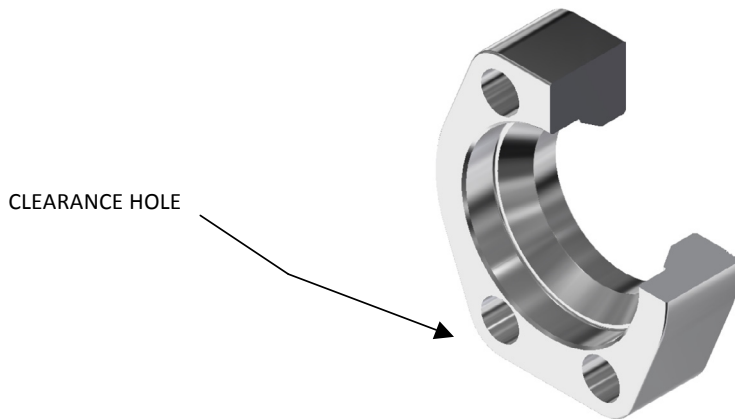
316 Stainless Steel: A4-70, DIN 912/ISO 4762

- For M16 SS Bolts and larger A4-80, DIN 912/ISO 4762

3D step models available upon request

SAE 10000 PSI Retain Ring Flange with Clearance Holes

SAE J518 Code 62 (ISO 6162-2) Bolt Pattern



RFAC104 - Retain Ring Flange with Clearance Hole, for Grooved Schedule XXS Pipe Only, NPS

Size	Schedule	OD x Wall (mm)	Standard Part Number	Working Pressure PSI (Bar)	Weight lbs (kg)
1/2"	XXS	21.3 x 7.47	RFAC104-050-*	10000 (690)	0.62 (0.28)
3/4"	XXS	26.7 x 7.82	RFAC104-075-*	10000 (690)	1.01 (0.46)
1"	XXS	33.4 x 9.09	RFAC104-100-*	10000 (690)	1.56 (0.71)
1-1/4"	XXS	42.2 x 9.70	RFAC104-125-*	10000 (690)	2.20 (1.00)
1-1/4" ⁽¹⁾	XXS	42.2 x 9.70	RFAC104-125-M14*	10000 (690)	2.20 (1.00)
1-1/2"	XXS	48.3 x 10.20	RFAC104-150-*	10000 (690)	3.96 (1.80)
2"	XXS	60.3 x 11.10	RFAC104-200-*	10000 (690)	6.67 (3.03)
2-1/2"	XXS	73.0 x 14.02	RFAC104-250-*	10000 (690)	14.88 (6.76)
3"	XXS	88.9 x 15.20	RFAC104-300-*	10000 (690)	25.15 (11.43)

⁽¹⁾ Designates Clearance Hole for M14 bolt - special order

Ordering Example: RFAC104-200-SS

*** Materials:**

Standard, No Designation = Carbon Steel, Zinc Nickel Plated.

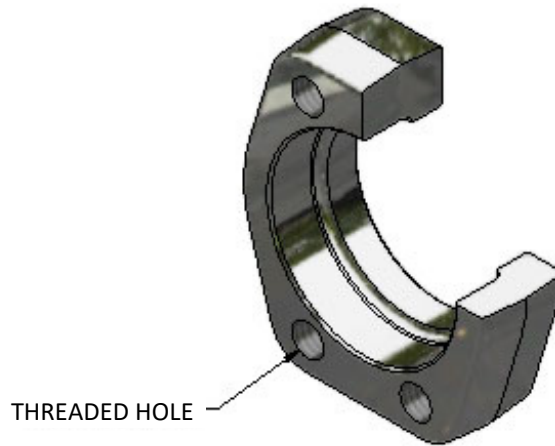
HDG = Carbon Steel, Hot Dip Galvanized.

SS = Stainless Steel, Type 316.

* Insert Material _____

SAE 10000 PSI Retain Ring Flange with Threaded Holes

SAE J518 Code 62 (ISO 6162-2) Bolt Pattern



RFAC104 - Retain Ring Flange with Threaded Hole, for Grooved Schedule XXS Pipe, NPS, with UNC Threaded Holes

Size	Schedule	OD x Wall (mm)	Standard Part Number	Working Pressure PSI (Bar)	Weight lbs (kg)
1/2"	XXS	21.3 x 7.47	RFAT104-050-*	10000 (690)	0.62 (0.28)
3/4"	XXS	26.7 x 7.82	RFAT104-075-*	10000 (690)	1.01 (0.46)
1"	XXS	33.4 x 9.09	RFAT104-100-*	10000 (690)	1.56 (0.71)
1-1/4"	XXS	42.2 x 9.70	RFAT104-125-*	10000 (690)	2.20 (1.00)
1-1/2"	XXS	48.3 x 10.20	RFAT104-150-*	10000 (690)	3.96 (1.80)
2"	XXS	60.3 x 11.10	RFAT104-200-*	10000 (690)	6.67 (3.03)
2-1/2"	XXS	73.0 x 14.02	RFAT104-250-*	10000 (690)	14.88 (6.76)
3"	XXS	88.9 x 15.20	RFAT104-300-*	10000 (690)	25.15 (11.43)

*** Materials:**

Standard, No Designation = Carbon Steel, Zinc Nickel Plated.

HDG = Carbon Steel, Hot Dip Galvanized.

SS = Stainless Steel, Type 316.

Ordering Example: RFAT104-200-SS

* Insert Material _____

RFATM104 - Retain Ring Flange with Threaded Hole, for Grooved Schedule XXS Pipe, NPS, with Metric Threaded Holes

Size	Schedule	OD x Wall (mm)	Standard Part Number	Working Pressure PSI (Bar)	Weight lbs (kg)
1/2"	XXS	21.3 x 7.47	RFATM104-050-*	10000 (690)	0.62 (0.28)
3/4"	XXS	26.7 x 7.82	RFATM104-075-*	10000 (690)	1.01 (0.46)
1"	XXS	33.4 x 9.09	RFATM104-100-*	10000 (690)	1.56 (0.71)
1-1/4"	XXS	42.2 x 9.70	RFATM104-125-*	10000 (690)	2.20 (1.00)
1-1/4 ⁽¹⁾ "	XXS	42.2 x 9.70	RFATM104-125-M14-*	10000 (690)	2.20 (1.00)
1-1/2"	XXS	48.3 x 10.20	RFATM104-150-*	10000 (690)	3.96 (1.80)
2"	XXS	60.3 x 11.10	RFATM104-200-*	10000 (690)	6.67 (3.03)
2-1/2"	XXS	73.0 x 14.02	RFATM104-250-*	10000 (690)	14.88 (6.76)
3"	XXS	88.9 x 15.20	RFATM104-300-*	10000 (690)	25.15 (11.43)

⁽¹⁾ Designates Threaded Holes for M14 bolts - special order

Ordering Example: RFATM104-200-SS

*** Materials:**

Standard, No Designation = Carbon Steel, Zinc Nickel Plated.

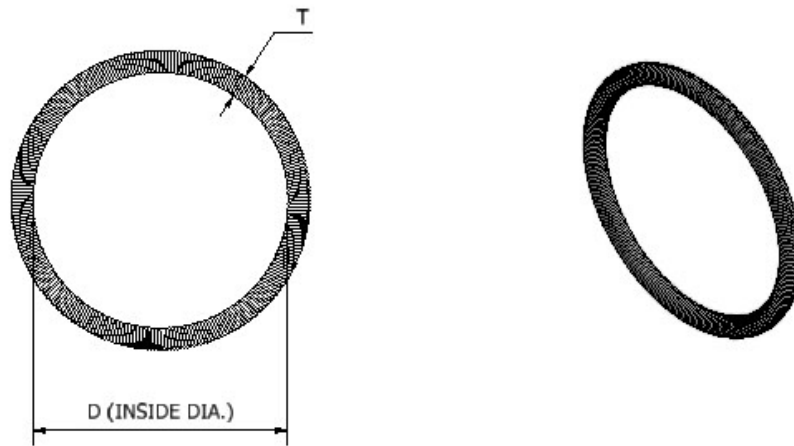
HDG = Carbon Steel, Hot Dip Galvanized.

SS = Stainless Steel, Type 316.

* Insert Material _____

3D step models available upon request

SAE 10000 PSI Retain Ring

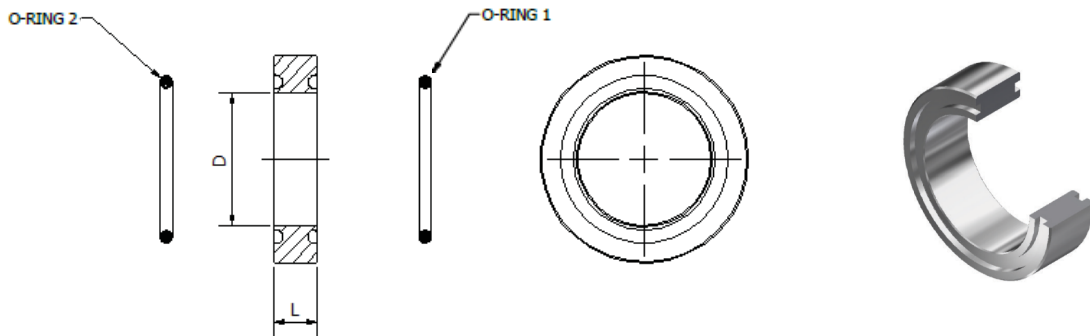


RA - Retain Ring				
Size	Retain Ring Part Number	Dimensions in (mm)		WT lbs (kg)
		D	t	
1/2"	RA-050	0.85 (21.6)	0.16 (4.0)	0.01 (0.005)
3/4"	RA-075	1.24 (31.5)	0.16 (4.0)	0.02 (0.009)
1"	RA-100	1.32 (33.5)	0.20 (5.0)	0.03 (0.014)
1-1/4"	RA-125	1.59 (40.4)	0.20 (5.0)	0.04 (0.018)
1-1/2"	RA-150	1.99 (50.5)	0.20 (5.0)	0.05 (0.023)
2"	RA-200-6	2.38 (60.5)	0.20 (6.0)	0.07 (0.032)
2-1/2"	RA-250-7	2.93 (74.4)	0.28 (7.0)	0.08 (0.036)
3"	RA-300-8	3.56 (90.4)	0.31 (8.0)	0.14 (0.064)

Note:

Retain Ring 2", 2-1/2" and 3" have larger cross section

SAE 10000 PSI O-Ring Spacer for Retain Ring Pipe Flange Connection



OSA – O-Ring Spacer for Retain Ring Pipe Flange Connection

Size	Part Number	Dimensions in (mm)		O-Rings 1&2 (Buna) Part Number	WT lbs (kg)
		D	L		
1/2"	OSA-SCHXXS-050-*^-^	0.25 (6.4)	0.50 (12.7)	OR^~3-909	0.11 (0.05)
3/4"	OSA-SCHXXS-075-*^-^	0.43 (10.9)	0.50 (12.7)	OR^~3-913	0.18 (0.08)
1"	OSA-SCHXXS-100-*^-^	0.60 (15.2)	0.50 (12.7)	OR^~3-916	0.21 (0.10)
1-1/4"	OSA-SCHXXS-125-*^-^	0.90 (22.9)	0.50 (12.7)	OR^~3-918	0.26 (0.12)
1-1/2"	OSA-SCHXXS-150-*^-^	1.10 (27.9)	0.50 (12.7)	OR^~3-924	0.33 (0.15)
2"	OSA-SCHXXS-200-*^-^	1.50 (38.1)	0.50 (12.7)	OR^~3-928	0.43 (0.20)
2-1/2"	OSA-SCHXXS-250-*^-^	1.77 (49.9)	1.00 (26.4)	OR^~2-232	1.17 (0.53)
3"	OSA-SCHXXS-300-*^-^	2.30 (58.4)	1.00 (25.4)	OR^~2-232	1.68 (0.77)

*** Materials:**

Standard, No Designation = All Carbon Steel, Zinc Nickel Plated.

SS = Stainless Steel, Type 316.

^ O-Ring Type:

Standard, No Designation = Buna Nitrile.

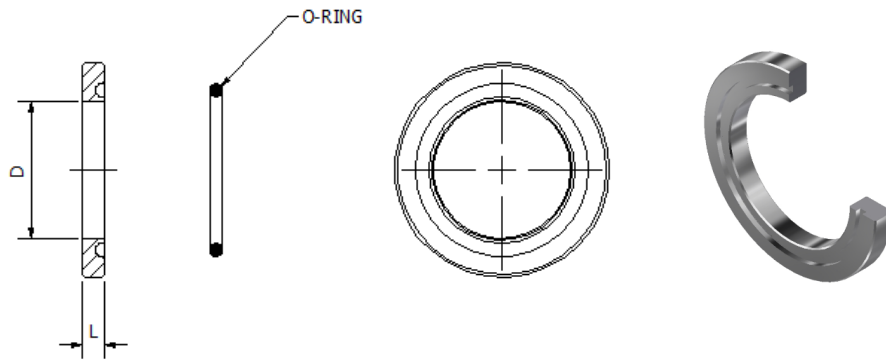
V = Viton.

Ordering Example: OSA-SCHXXS-200-SS-V

* Insert Material

^ Insert O-Ring Type

SAE 10000 PSI O-Ring Spacer for Retain Ring Pipe to Hose End



OSH – O-Ring Spacer for Retain Ring Pipe to Hose End					
Size	Part Number	Dimensions in (mm)		O-Ring (Buna) Part Number	WT lbs (kg)
		D	L		
1/2"	OSH-SCHXXS-050-*^-^	0.25 (6.4)	0.25 (6.4)	OR^-3-909	0.04 (0.02)
3/4"	OSH-SCHXXS-075-*^-^	0.43 (10.9)	0.25 (6.4)	OR^-3-913	0.07 (0.03)
1"	OSH-SCHXXS-100-*^-^	0.60 (15.2)	0.25 (6.4)	OR^-3-916	0.08 (0.04)
1-1/4"	OSH-SCHXXS-125-*^-^	0.90 (22.9)	0.25 (6.4)	OR^-3-918	0.09 (0.04)
1-1/2"	OSH-SCHXXS-150-*^-^	1.10 (27.9)	0.25 (6.4)	OR^-3-924	0.12 (0.05)
2"	OSH-SCHXXS-200-*^-^	1.50 (38.1)	0.25 (6.4)	OR^-3-928	0.20 (0.09)
2-1/2"	OSH-SCHXXS-250-*^-^	1.77 (49.9)	0.50 (12.7)	OR^-2-232	0.58 (0.26)
3"	OSH-SCHXXS-300-*^-^	2.30 (58.4)	0.50 (12.7)	OR^-2-237	0.85 (0.39)

*** Materials:**

Standard, No Designation = All Carbon Steel, Zinc Nickel Plated.

SS = Stainless Steel, Type 316.

^ O-Ring Type:

Standard, No Designation = Buna Nitrile.

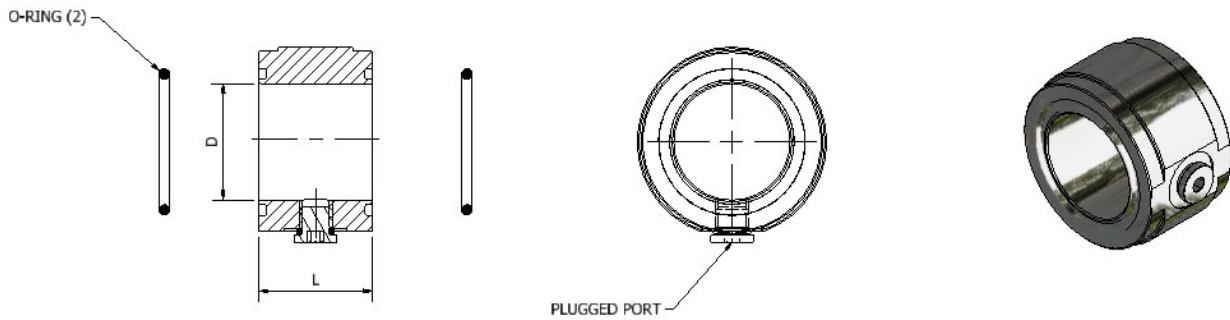
V = Viton.

Ordering Example: OSH-SCHXXS-200-SS-V

* Insert Material

^ Insert O-Ring Type

SAE 10000 PSI O-Ring Spacer with Pilot Port



OSP - O-Ring Spacer with Pilot Port for Retain Ring Pipe - 1/2" - 3" Complete with Buna O-Rings (Standard) and #4 SAE Port (Plugged)

Size	Part Number	Dimensions in (mm)		O-Rings 1&2 (Buna) Part Number	WT lbs (kg)
		D	L		
1/2"	OSP-SCHXXS-050-*^-^	0.25 (6.4)	1.50 (38.1)	OR^-3-909	0.44 (0.20)
3/4"	OSP-SCHXXS-075-*^-^	0.43 (10.9)	1.50 (38.1)	OR^-3-913	0.68 (0.31)
1"	OSP-SCHXXS-100-*^-^	0.60 (15.2)	1.50 (38.1)	OR^-3-916	0.82 (0.37)
1-1/4"	OSP-SCHXXS-125-*^-^	0.90 (22.9)	1.50 (38.1)	OR^-3-918	0.90 (0.41)
1-1/2"	OSP-SCHXXS-150-*^-^	1.10 (27.9)	1.50 (38.1)	OR^-3-924	1.47 (0.67)
2"	OSP-SCHXXS-200-*^-^	1.50 (38.1)	1.50 (38.1)	OR^-3-928	1.59 (0.72)
2-1/2"	OSP-SCHXXS-250-*^-^	1.77 (49.9)	1.50 (38.1)	OR^-2-232	2.11 (0.96)
3"	OSP-SCHXXS-300-*^-^	2. (.)	1.50 (38.1)	OR^-2-237	2.60 (1.18)

*** Materials:**

Standard, No Designation = All Carbon Steel, Zinc Nickel Plated.
 SS = Stainless Steel, Type 316.

^ O-Ring Type:

Standard, No Designation = Buna Nitrile.
 V = Viton.

Ordering Example: OSP-SCHXXS-SS-V

* Insert Material _____
 ^ Insert O-Ring Type _____

OSPM - O-Ring Spacer with Metric Pilot Port for Retain Ring Pipe - 1/2" - 3" Complete with Buna O-Rings (Standard) and G1/8 Port (Plugged)

Size	Part Number	Dimensions in (mm)		O-Rings 1&2 (Buna) Part Number	WT lbs (kg)
		D	L		
1/2"	OSPM-SCHXXS-050-*^-^	0.25 (6.4)	1.50 (38.1)	OR^-3-909	0.44 (0.20)
3/4"	OSPM-SCHXXS-075-*^-^	0.43 (10.9)	1.50 (38.1)	OR^-3-913	0.68 (0.31)
1"	OSPM-SCHXXS-100-*^-^	0.60 (15.2)	1.50 (38.1)	OR^-3-916	0.82 (0.37)
1-1/4"	OSPM-SCHXXS-125-*^-^	0.90 (22.9)	1.50 (38.1)	OR^-3-918	0.90 (0.41)
1-1/2"	OSPM-SCHXXS-150-*^-^	1.10 (27.9)	1.50 (38.1)	OR^-3-924	1.47 (0.67)
2"	OSPM-SCHXXS-200-*^-^	1.50 (38.1)	1.50 (38.1)	OR^-3-928	1.59 (0.72)
2-1/2"	OSPM-SCHXXS-250-*^-^	1.77 (49.9)	1.50 (38.1)	OR^-2-232	2.11 (0.96)
3"	OSPM-SCHXXS-300-*^-^	2.30 (58.4)	1.50 (38.1)	OR^-2-237	2.60 (1.18)

*** Materials:**

Standard, No Designation = All Carbon Steel, Zinc Nickel Plated.
 SS = Stainless Steel, Type 316.

^ O-Ring Type:

Standard, No Designation = Buna Nitrile.
 V = Viton.

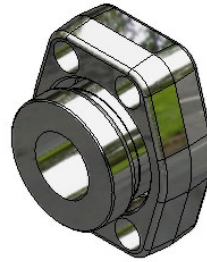
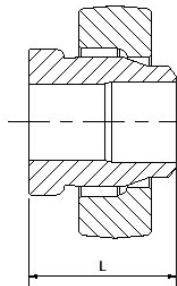
Ordering Example: OSPM-SCHXXS-200-SS-V

* Insert Material _____
 ^ Insert O-Ring Type _____

3D step models available upon request

SAE 10000 PSI Butt Weld Adapter Assembly (Bump Style) with Clearance Holes, NPS

SAE J518 Code 62 (ISO 6162-2) Flange Pattern



Complete Flange Set Includes:

- One (1) Retain Ring Flange
- One (1) Weld Adapter Body

To be Ordered Separately:

- Bolt Kit (See Page I1)
- O-Ring Spacer (See Page I5)

A/BWAHP - Butt Weld Adapter Assembly (Bump Style) with Clearance Holes, NPS						
Size	Pipe Size	Complete Flange Set Part Number	WT/Set lbs (kg)	Dimension (in) L	Weld Adapter Body Part Number	Flange Part Number
1/2"	1/2" SCHXXS	A/BWAHP-SCHXXS-050-FAC104-*	0.69 (0.31)	1.50 (38.1)	BWAHP-SCHXXS-050-SS	RFAC104-050-*
3/4"	3/4" SCHXXS	A/BWAHP-SCHXXS-075-FAC104-*	1.40 (0.64)	2.00 (50.8)	BWAHP-SCHXXS-075-SS	RFAC104-075-*
1"	1" SCHXXS	A/BWAHP-SCHXXS-100-FAC104-*	1.81 (0.82)	2.00 (50.8)	BWAHP-SCHXXS-100-SS	RFAC104-100-*
1-1/4"	1-1/4" SCHXXS	A/BWAHP-SCHXXS-125-FAC104-*	2.83 (1.29)	2.50 (63.5)	BWAHP-SCHXXS-125-SS	RFAC104-125-*
1-1/4" ⁽¹⁾	1-1/4" SCHXXS	A/BWAHP-SCHXXS-125-FAC104-M14-*	2.83 (1.29)	2.50 (63.5)	BWAHP-SCHXXS-125-SS	RFAC104-125-M14-*
1-1/2"	1-1/2" SCHXXS	A/BWAHP-SCHXXS-150-FAC104-*	4.45 (2.02)	2.75 (69.8)	BWAHP-SCHXXS-150-SS	RFAC104-150-*
2"	2" SCHXXS	A/BWAHP-SCHXXS-200-FAC34-*	6.71 (3.05)	3.00 (76.2)	BWAHP-SCHXXS-200-SS	RFAC104-200-*
2-1/2"	2-1/2" SCHXXS	A/BWAHP-SCHXXS-250-FAC34-*	17.30 (7.86)	3.50 (88.9)	BWAHP-SCHXXS-250-SS	RFAC104-250-*
3"	3" SCHXXS	A/BWAHP-SCHXXS-300-FAC34-*	29.21 (13.28)	3.75 (95.3)	BWAHP-SCHXXS-300-SS	RFAC104-300-*

⁽¹⁾Designates Clearance Holes for M14 bolts - special order

Ordering Example: A/BWAHP-SCHXXS-200-FC104-SS

* Insert Material

^ Note:

Weld Adapter Body is only available in Duplex UNS S32205 (EN1.4462)

*** Flange Materials:**

Standard, No Designation = All Carbon Steel, Zinc Nickel Plated.

SS = Stainless Steel, Type 316.

HDG = Carbon Steel, Hot Dip Galvanized Flange

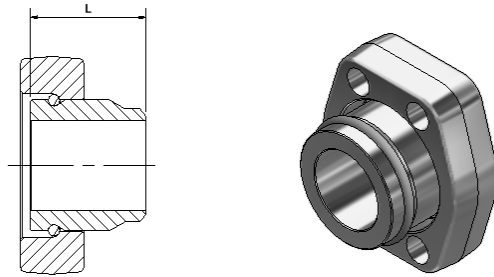
Note:

To Order A Retain Ring Flange with UNC Threaded Holes, Replace FAC with FAT

To Order a Retain Ring Flange with Metric Threads, Replace FAC with FATM

SAE 10000 PSI Butt Weld Adapter Assembly Retain Ring Style with Clearance Holes, NPS

SAE J518 Code 62 (ISO 6162-2) Flange Pattern



Complete Flange Set Includes:

- One (1) Retain Ring Flange
- One (1) Weld Adapter Body
- One (1) Retain Ring

To be Ordered Separately:

- Bolt Kit (See Page I1)
- O-Ring Spacer (See Page I5)

A/BWARHP - Butt Weld Adapter Assembly Retain Ring Style with Clearance Holes, NPS

Size	Pipe Size	Complete Flange Set Part Number	WT/Set lbs (kg)	Dimension (in) L	Weld Adapter Body Part Number	Flange Part Number
1/2"	1/2" SCHXXS	A/BWARHP-SCHXXS-050-FAC104-*	0.69 (0.31)	1.50 (38.1)	BWARHP-SCHXXS-050-SS	RFAC104-050-*
3/4"	3/4" SCHXXS	A/BWARHP-SCHXXS-075-FAC104-*	1.40 (0.64)	2.00 (50.8)	BWARHP-SCHXXS-075-SS	RFAC104-075-*
1"	1" SCHXXS	A/BWARHP-SCHXXS-100-FAC104-*	1.81 (0.82)	2.00 (50.8)	BWARHP-SCHXXS-100-SS	RFAC104-100-*
1-1/4"	1-1/4" SCHXXS	A/BWARHP-SCHXXS-125-FAC104-*	2.83 (1.29)	2.50 (63.5)	BWARHP-SCHXXS-125-SS	RFAC104-125-*
1-1/4" ⁽¹⁾	1-1/4" SCHXXS	A/BWARHP-SCHXXS-125-FAC104-M14-*	2.83 (1.29)	2.50 (63.5)	BWARHP-SCHXXS-125-SS	RFAC104-125-M14-*
1-1/2"	1-1/2" SCHXXS	A/BWARHP-SCHXXS-150-FAC104-*	4.45 (2.02)	2.75 (69.8)	BWARHP-SCHXXS-150-SS	RFAC104-150-*
2"	2" SCHXXS	A/BWARHP-SCHXXS-200-FAC104-*	6.71 (3.05)	3.00 (76.2)	BWARHP-SCHXXS-200-SS	RFAC104-200-*
2-1/2"	2-1/2" SCHXXS	A/BWARHP-SCHXXS-250-FAC104-*	17.30 (7.86)	3.50 (88.9)	BWARHP-SCHXXS-250-SS	RFAC104-250-*
3"	3" SCHXXS	A/BWARHP-SCHXXS-300-FAC104-*	29.21 (13.28)	3.75 (95.3)	BWARHP-SCHXXS-300-SS	RFAC104-300-*

⁽¹⁾ Designates Clearance Holes for M14 bolts - special order

Ordering Example: A/BWARHP-SCHXXS-150-FAC104-SS

^ Note:

Weld Adapter Body is only available in Duplex UNS S32205 (EN1.4462)

* Insert Material _____

*** Flange Materials:**

Standard, No Designation = All Carbon Steel, Zinc Nickel Plated.

SS = Stainless Steel, Type 316.

HDG = Carbon Steel, Hot Dip Galvanized Flange

Note:

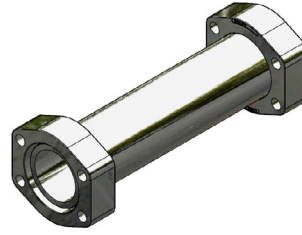
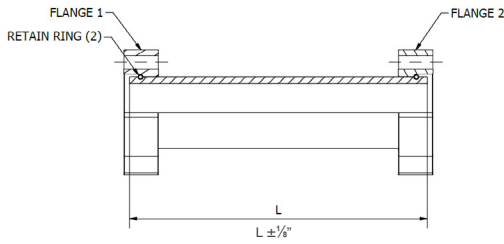
To Order A Retain Ring Flange with UNC Threaded Holes, Replace FAC with FAT

To Order a Retain Ring Flange with Metric Threads, Replace FAC with FATM

3D step models available upon request

ISO 10000 Retain Ring Flange Pipe Assembly, NPS

SAE J518 Code 62 (ISO 6162-2) Flange Pattern



- Complete assembly consists of:
- One (1) length of clean pipe
 - Two (2) retain ring flanges
 - Two (2) retain rings

- To be Ordered Separately:
- O-Ring Seal Spacers

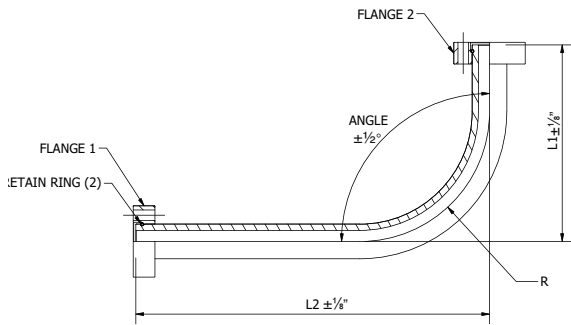
		Code	PAR	Pipe Material	Pipe Size & Schedule	Flange 1	Flange 2	Length	Options
Bent Pipe Assembly - Retain Ring		PAR							
Pipe Material	Duplex UNS S32205	2205							
	TMP2205SS								
Pipe Size	1/2"	SCHXXS-050							
	3/4"	SCHXXS-075							
	1"	SCHXXS-100							
	1-1/4"	SCHXXS-125							
	1-1/2"	SCHXXS-150							
	2"	SCHXXS-200							
	2-1/2"	SCHXXS-250							
	3"	SCHXXS-300							
Flange Type Carbon Steel	RFAC104 with Clearance Holes	FAC104							
	RFAT104 with Threaded Holes	FAT104							
	RFATM104 with Metric Threaded Holes	FATM104							
Length	L	Specify (in.)							
Flange Options	Flange Stainless Steel Type 316	SS							
	Flange Hot Dip Galvanized	HDG							

♦TMP2205SS PIPE IS THE ONLY PIPE MATERIAL AVAILABLE FOR THIS PRESSURE RATING
Standard No designation = Flanges Carbon Steel Flanges, Zinc Nickel Plated

PART Number (EXAMPLE): PAR/2205-SCHXXS-250-FAC104-240

SAE 10000 PSI, Retain Ring Flare Flange Bent Pipe Assembly, NPS

SAE J518 Code 62 (ISO 6162-2) Flange Pattern



Complete assembly consists of:

- One (1) length of bent clean pipe
- Two (2) retain ring flare flanges
- Two (2) retain rings

To be Ordered Separately:

- O-ring Seal Spacers

Bent Pipe Assembly - Retain Ring			Code	BPAR	Pipe Material	Pipe Size & Schedule	Flange 1	Flange 2	Rad 1	Rad.	Lgth L1	Ang	Lgth L2	Options
Pipe Material	Duplex UNS S32205 TMP2205SS	2205												
Pipe Size	1/2"	SCHXXS-050												
	3/4"	SCHXXS-075												
	1"	SCHXXS-100												
	1-1/4"	SCHXXS-125												
	1-1/2"	SCHXXS-150												
	2"	SCHXXS-200												
	2-1/2"	SCHXXS-250												
	3"	SCHXXS-300												
Flange Type Carbon Steel	RFAC104 with Clearance Holes	FAC104												
	RFAT104 with Threaded Holes	FAT104												
	RFATM104 with Metric Threaded Holes	FATM104												
Radius	R	Specify (in.)												
Length	L1	Specify (in.)												
Angle	Max 90°	Specify (°)												
Length	L2	Specify (in.)												
Options	Flange Stainless Steel Type 316	SS												
	Flange Hot Dip Galvanized	HDG												

Pipe Size	Flange Size	Dimensions	
Schedule	(in)	L(in.)	R
1/2" SCHXXS	1/2"	6.75	3.9
3/4" SCHXXS	3/4"	7.00	4.3
1" SCHXXS	1"	7.75	4.9
1-1/4" SCHXXS	1-1/4"	8.63	5.6
1-1/2" SCHXXS	1-1/2"	11.75	8.2
2" SCHXXS	2"	13.00	9.5
2-1/2" SCHXXS	2-1/2"	16.00	12.5
3" SCHXXS	3"	20.00	15

Note:

♦TMP2205SS PIPE IS THE ONLY PIPE MATERIAL AVAILABLE FOR THIS PRESSURE RATING

Flange Standard No designation = Carbon Steel, Zinc Nickel Plated

PART Number (EXAMPLE): BPAR/2205-SCHXXS-200-FAC104-FAC104-9.5-60-90-144

3D step models available upon request

Introduction

Technical Data

Pipe Selection Guide

16 bar, 90° Flare

ANSI 150#, 300# Flare

SAE 1000, 70 bar

SAE 3000, 210 bar

SAE 6000, 420 bar

SAE 10000, 690 bar

ISO 6164, 400 bar

ISO 6164, 400 bar F10° Flare

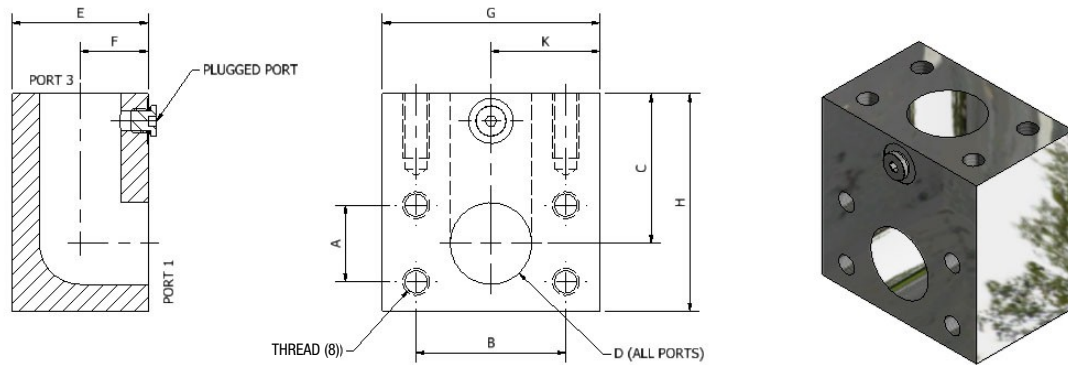
Clamp Supports - Heavy Series

Valves, Ball and Check



SAE 10000 PSI Block Elbow

SAE J518 Code 62 (ISO 6162-2) Flange Pattern



BE104 - Block Elbow Flat Face with Threaded Holes Complete with #4 SAE Port (Plugged), NPS

Size	Block Elbow Part Number	Dimensions (in)									Thread UNC-2B	WT lbs (kg)	Working Pressure PSI (bar)
		A	B	C	D	E	F	G	H	K			
1/2"	BE104-050-*	0.72	1.59	1.88	0.25	2.00	1.00	2.50	2.50	1.25	5/16"-18	3.30 (1.50)	10000 (690)
3/4"	BE104-075-*	0.94	2.00	2.25	0.43	2.00	1.00	3.00	3.25	1.50	3/8"-16	4.94 (2.25)	10000 (690)
1"	BE104-100-*	1.09	2.25	2.50	0.60	2.25	1.13	3.00	4.00	1.50	7/16"-14	6.72 (3.05)	10000 (690)
1-1/4"	BE104-125-*	1.25	2.63	2.75	0.90	2.50	1.25	4.00	4.00	2.00	1/2"-13	9.58 (4.36)	10000 (690)
1-1/2"	BE104-150-*	1.44	3.13	3.00	1.10	3.00	1.50	4.00	4.50	2.00	5/8"-11	12.06 (5.48)	10000 (690)
2"	BE104-200-*	1.75	3.81	3.38	1.50	3.00	1.50	5.00	5.00	2.50	3/4"-10	15.40 (7.00)	10000 (690)

Materials:

Standard, No Designation = All Carbon Steel, Zinc Nickel Plated.
 SS = Stainless Steel, Type 316.

Ordering Example: BE104-200-SS
 * Insert Material _____

BEM104 - Block Elbow Flat Face with Threaded Holes Complete with G1/8 Port (Plugged), Metric

Size	Block Elbow Part Number	Dimensions (mm)									Thread	WT lbs (kg)	Working Pressure PSI (bar)
		A	B	C	D	E	F	G	H	K			
1/2"	BEM104-050-*	18.3	40.4	47.8	6.4	50.8	25.4	63.5	63.5	31.8	M8 x 1.25	3.30 (1.50)	10000 (690)
3/4"	BEM104-075-*	23.9	50.8	57.2	10.9	50.8	25.4	76.2	82.6	38.1	M10 x 1.50	4.94 (2.25)	10000 (690)
1"	BEM104-100-*	27.7	57.2	63.5	15.2	57.2	28.7	76.2	101.6	38.1	M12 x 1.75	6.72 (3.05)	10000 (690)
1-1/4"	BEM104-125-*	31.8	66.8	69.9	22.9	63.5	31.8	101.6	101.6	50.8	M12 x 1.75	9.58 (4.36)	10000 (690)
1-1/4" ⁽¹⁾	BEM104-125-M14-*	31.8	66.8	69.9	22.9	63.5	31.8	101.6	101.6	50.8	M14 x 2.00	9.58 (4.36)	10000 (690)
1-1/2"	BEM104-150-*	36.6	79.5	76.2	27.9	76.2	38.1	101.6	114.3	50.8	M16 x 2.00	12.06 (5.48)	10000 (690)
2"	BEM104-200-*	44.5	96.8	85.9	38.1	76.2	38.1	127.0	127.0	63.5	M20 x 2.50	15.40 (7.00)	10000 (690)

⁽¹⁾Designates Threaded Holes for M14 bolts - special order

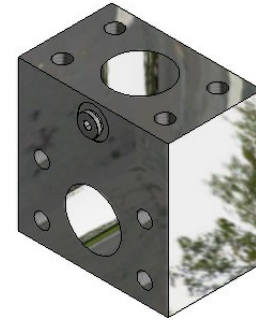
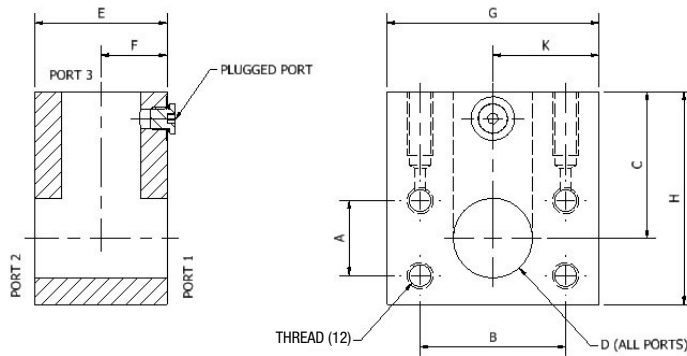
Materials:

Standard, No Designation = All Carbon Steel, Zinc Nickel Plated.
 SS = Stainless Steel, Type 316.

Ordering Example: BEM104-200-SS
 * Insert Material _____

SAE 10000 PSI Block Tee

SAE J518 Code 62 (ISO 6162-2) Flange Pattern



BT104 - Block Tee Flat Face with Threaded Holes Complete with #4 SAE Port (Plugged), NPS

Size	Block Tee Part No	Dimensions (in)									Thread UNC-2B	WT lbs (kg)	Working Pressure PSI (bar)
		A	B	C	D	E	F	G	H	K			
1/2"	BT104-050-*	0.72	1.59	1.88	0.25	2.00	1.00	2.50	2.50	1.25	5/16"-18	3.05 (1.38)	10000 (690)
3/4"	BT104-075-*	0.94	2.00	2.25	0.43	2.00	1.00	3.00	3.25	1.50	3/8"-16	4.66 (2.11)	10000 (690)
1"	BT104-100-*	1.09	2.25	2.50	0.60	2.25	1.13	3.00	4.00	1.50	7/16"-14	6.20 (2.81)	10000 (690)
1-1/4"	BT104-125-*	1.25	2.63	2.75	0.90	2.50	1.25	4.00	4.00	2.00	1/2"-13	8.86 (4.02)	10000 (690)
1-1/2"	BT104-150-*	1.44	3.13	3.00	1.10	3.00	1.50	4.00	4.50	2.00	5/8"-11	11.04 (5.01)	10000 (690)
2"	BT104-200-*	1.75	3.81	3.38	1.50	3.00	1.50	5.00	5.00	2.50	3/4"-10	14.41 (6.54)	10000 (690)

BTM104 - Block Tee Flat Face with Threaded Holes Complete with G1/8 Port (Plugged), Metric

Size (inch)	Block Tee Part No	Dimensions (mm)									Thread	WT lbs (kg)	Working Pressure PSI (bar)
		A	B	C	D	E	F	G	H	K			
1/2"	BTM104-050-*	18.3	40.4	47.8	6.40	50.8	25.4	63.5	63.5	31.8	M8 X 1.25	3.07 (1.39)	10000 (690)
3/4"	BTM104-075-*	23.9	50.8	57.2	10.9	50.8	25.4	76.2	82.6	38.1	M10 X 1.50	4.67 (2.12)	10000 (690)
1"	BTM104-100-*	27.7	57.2	63.5	15.2	57.2	28.7	76.2	101.6	38.1	M12 X 1.75	6.22 (2.82)	10000 (690)
1-1/4"	BTM104-125-*	31.8	66.8	69.9	22.9	63.5	31.8	101.6	101.6	50.8	M12 X 1.75	8.88 (4.03)	10000 (690)
1-1/4" ⁽¹⁾	BTM104-125-M14-*	31.8	66.8	69.9	22.9	63.5	31.8	101.6	101.6	50.8	M14 x 2.00	8.88 (4.03)	10000 (690)
1-1/2"	BTM104-150-*	36.6	79.5	76.2	27.9	76.2	38.1	101.6	114.3	50.8	M16 X 2.00	11.07 (5.02)	10000 (690)
2"	BTM104-200-*	44.5	96.8	85.9	38.1	76.2	38.1	127.0	127.0	63.5	M20 X 2.50	14.44(6.55)	10000 (690)

⁽¹⁾Designates Threaded Holes for M14 bolts - special order

Ordering Example: BTM104-200-SS

* Materials:

Standard, No Designation = All Carbon Steel, Zinc Nickel Plated.

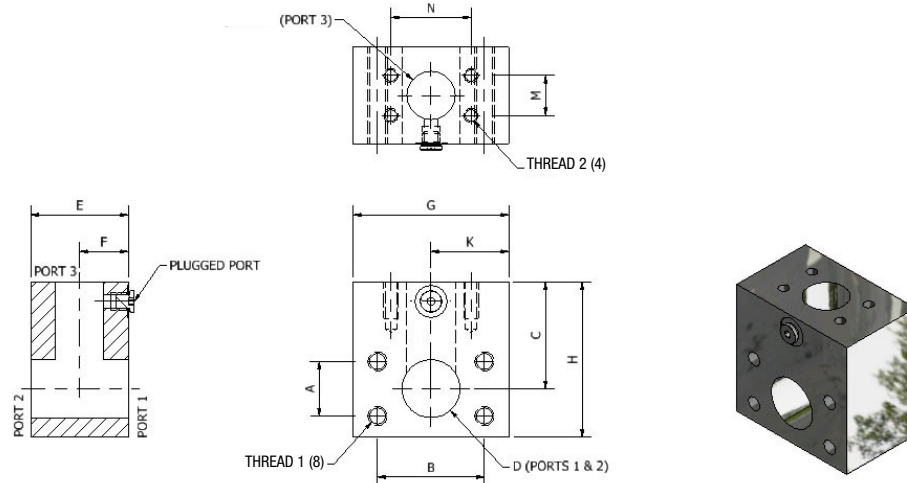
SS = Stainless Steel, Type 316.

* Insert Material

3D step models available upon request

SAE 10000 PSI Reducing Branch Block Tee - NPS

SAE J518 Code 62 (ISO 6162-2) Flange Pattern



BTR104 - Reducing Branch Block Tee Flat Face with Threaded Holes Complete with #4 SAE Port (Plugged), NPS

Size (run x branch)	Tee Part Number	Dimensions (in)												Thread 1 UNC-2B	Thread 2 UNC-2B	WT lbs (kg)	Working Pressure PSI (bar)
		A	B	C	D	D1	E	F	G	H	K	M	N				
3/4"x1/2"	BTR104-075x050-*	0.94	2.00	2.25	0.75	0.50	2.00	1.00	3.00	3.25	1.50	0.72	1.59	3/8"-16	5/16"-18	5.20 (2.36)	10000 (690)
1"x1/2"	BTR104-100x050-*	1.09	2.25	2.50	0.94	0.50	2.25	1.13	3.00	4.00	1.50	0.72	1.59	7/16"-14	5/16"-18	5.20 (2.36)	10000 (690)
1"x3/4"	BTR104-100x075-*	1.09	2.25	2.50	0.94	0.75	2.25	1.13	3.00	4.00	1.50	0.94	2.00	7/16"-14	3/8"-16	5.20 (2.36)	10000 (690)
1-1/4"x1/2"	BTR104-125x050-*	1.25	2.63	2.75	1.25	0.50	2.50	1.25	4.00	4.00	2.00	0.72	1.59	1/2"-13	5/16"-18	10.00 (4.54)	10000 (690)
1-1/4"x3/4"	BTR104-125x075-*	1.25	2.63	2.75	1.25	0.75	2.50	1.25	4.00	4.00	2.00	0.94	2.00	1/2"-13	3/8"-16	10.00 (4.54)	10000 (690)
1-1/4"x1"	BTR104-125x100-*	1.25	2.63	2.75	1.25	0.94	2.50	1.25	4.00	4.00	2.00	1.09	2.25	1/2"-13	7/16"-14	10.00 (4.54)	10000 (690)
1-1/2"x1/2"	BTR104-150x050-*	1.44	3.13	3.00	1.50	0.50	3.00	1.50	4.00	4.50	2.00	0.72	1.59	5/8"-11	5/16"-18	11.30 (5.13)	10000 (690)
1-1/2"x3/4"	BTR104-150x075-*	1.44	3.13	3.00	1.50	0.75	3.00	1.50	4.00	4.50	2.00	0.94	2.00	5/8"-11	3/8"-16	11.30 (5.13)	10000 (690)
1-1/2"x1"	BTR104-150x100-*	1.44	3.13	3.00	1.50	0.94	3.00	1.50	4.00	4.50	2.00	1.09	2.25	5/8"-11	7/16"-14	11.30 (5.13)	10000 (690)
1-1/2"x1-1/4"	BTR104-150x125-*	1.44	3.13	3.00	1.50	1.25	3.00	1.50	4.00	4.50	2.00	1.25	2.63	5/8"-11	1/2"-13	11.30 (5.13)	10000 (690)
2"x1/2"	BTR104-200x050-*	1.75	3.81	3.38	1.94	0.50	3.00	1.50	5.00	5.00	2.50	0.72	1.59	3/4"-10	5/16"-18	14.80 (6.71)	10000 (690)
2"x3/4"	BTR104-200x075-*	1.75	3.81	3.38	1.94	0.75	3.00	1.50	5.00	5.00	2.50	0.94	2.00	3/4"-10	3/8"-16	14.80 (6.71)	10000 (690)
2"x1"	BTR104-200x100-*	1.75	3.81	3.38	1.94	0.94	3.00	1.50	5.00	5.00	2.50	1.09	2.25	3/4"-10	7/16"-14	14.80 (6.71)	10000 (690)
2"x1-1/4"	BTR104-200x125-*	1.75	3.81	3.38	1.94	1.25	3.00	1.50	5.00	5.00	2.50	1.25	2.63	3/4"-10	1/2"-13	14.80 (6.71)	10000 (690)
2"x1-1/2"	BTR104-200x150-*	1.75	3.81	3.38	1.94	1.50	3.00	1.50	5.00	5.00	2.50	1.44	3.13	3/4"-10	5/8"-11	14.80 (6.71)	10000 (690)

*** Materials:**

Standard, No Designation = All Carbon Steel, Zinc Nickel Plated.

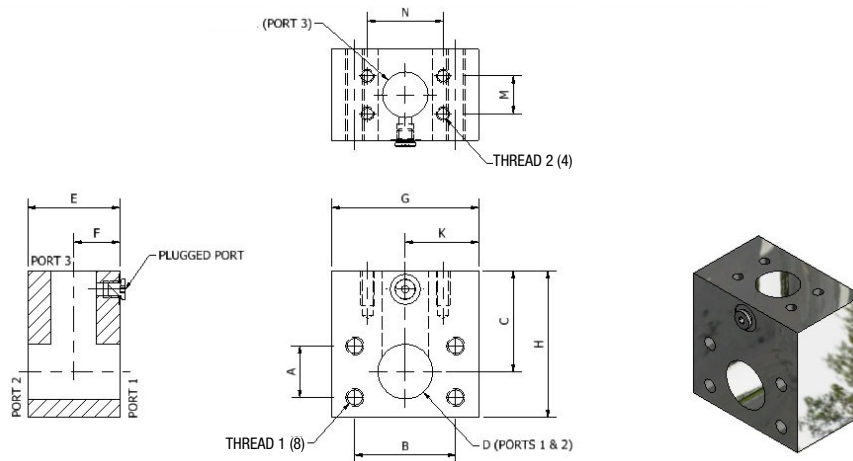
SS = Stainless Steel, Type 316.

Ordering Example: BTR104-200x050-SS

* Insert Material

SAE 10000 PSI Reducing Branch Block Tee - Metric

SAE J518 Code 62 (ISO 6162-2) Flange Pattern



BTRM104 - Reducing Branch Block Tee Flat Face with Threaded Holes Complete with G1/8 Port (Plugged), Metric

Size (run x branch)	Block Tee Part Number	Dimensions (mm)												Thread 1	Thread 2	WT lbs (kg)	Working Pressure PSI (bar)
		A	B	C	D	D1	E	F	G	H	K	M	N				
3/4"x1/2"	BTRM104-075x050-*	23.9	50.8	57.2	19.1	12.7	50.8	25.4	76.2	82.6	38.1	18.3	40.4	M10 x 1.50	M8 x 1.25	5.20 (2.36)	10000 (690)
1"x1/2"	BTRM104-100x050-*	27.7	57.2	63.5	23.9	12.7	57.2	28.7	76.2	101.6	38.1	18.3	40.4	M12 x 1.75	M8 x 1.25	5.20 (2.36)	10000 (690)
1"x3/4"	BTRM104-100x075-*	27.7	57.2	63.5	23.9	19.1	57.2	28.7	76.2	101.6	38.1	23.9	50.8	M12 x 1.75	M10 x 1.50	5.20 (2.36)	10000 (690)
1-1/4"x1/2"	BTRM104-125x050-*	31.8	66.8	69.9	31.8	12.7	63.5	31.8	101.6	101.6	50.8	18.3	40.4	M12 x 1.75	M8 x 1.25	10.00 (4.54)	10000 (690)
1-1/4"x1/2" ⁽²⁾	BTRM104-125-M14x050*	31.8	66.8	69.9	31.8	12.7	63.5	31.8	101.6	101.6	50.8	18.3	40.4	M14 x 2.00	M8 x 1.25	10.00 (4.54)	10000 (690)
1-1/4"x3/4"	BTRM104-125x075-*	31.8	66.8	69.9	31.8	19.1	63.5	31.8	101.6	101.6	50.8	23.9	50.8	M12 x 1.75	M10 x 1.50	10.00 (4.54)	10000 (690)
1-1/4" ⁽²⁾ x3/4"	BTRM104-125-M14x075*	31.8	66.8	69.9	31.8	19.1	63.5	31.8	101.6	101.6	50.8	23.9	50.8	M14 x 2.00	M10 x 1.50	10.00 (4.54)	10000 (690)
1-1/4"x1"	BTRM104-125x100-*	31.8	66.8	69.9	31.8	23.9	63.5	31.8	101.6	101.6	50.8	27.7	57.2	M12 x 1.75	M12 x 1.75	10.00 (4.54)	10000 (690)
1-1/4" ⁽²⁾ x1"	BTRM104-125-M14x100*	31.8	66.8	69.9	31.8	23.9	63.5	31.8	101.6	101.6	50.8	27.7	57.2	M14 x 2.00	M12 x 1.75	10.00 (4.54)	10000 (690)
1-1/2"x1/2"	BTRM104-150x050-*	36.6	79.5	76.2	38.1	12.7	76.2	38.1	101.6	114.3	50.8	18.3	40.4	M16 x 2.00	M8 x 1.25	11.30 (5.13)	10000 (690)
1-1/2"x3/4"	BTRM104-150x075-*	36.6	79.5	76.2	38.1	19.1	76.2	38.1	101.6	114.3	50.8	23.9	50.8	M16 x 2.00	M10 x 1.50	11.30 (5.13)	10000 (690)
1-1/2"x1"	BTRM104-150x100-*	36.6	79.5	76.2	38.1	23.9	76.2	38.1	101.6	114.3	50.8	27.7	57.2	M16 x 2.00	M12 x 1.75	11.30 (5.13)	10000 (690)
1-1/2"x1-1/4"	BTRM104-150x125-*	36.6	79.5	76.2	38.1	31.8	76.2	38.1	101.6	114.3	50.8	31.8	66.8	M16 x 2.00	M12 x 1.75	11.30 (5.13)	10000 (690)
1-1/2"x1-1/4" ⁽¹⁾	BTRM104-150x125-M14-*	36.6	79.5	76.2	38.1	31.8	76.2	38.1	101.6	114.3	50.8	31.8	66.8	M16 x 2.00	M14 x 2.00	11.30 (5.13)	10000 (690)
2"x1/2"	BTRM6104-200x050-*	44.5	96.8	85.9	49.3	12.7	76.2	38.1	127.0	127.0	63.5	18.3	40.4	M20 x 2.50	M8 x 1.25	14.80 (6.71)	10000 (690)
2"x3/4"	BTRM104-200x075-*	44.5	96.8	85.9	49.3	19.1	76.2	38.1	127.0	127.0	63.5	23.9	50.8	M20 x 2.50	M10 x 1.50	14.80 (6.71)	10000 (690)
2"x1"	BTRM104-200x100-*	44.5	96.8	85.9	49.3	23.9	76.2	38.1	127.0	127.0	63.5	27.7	57.2	M20 x 2.50	M12 x 1.75	14.80 (6.71)	10000 (690)
2"x1-1/4"	BTRM104-200x125-*	44.5	96.8	85.9	49.3	31.8	76.2	38.1	127.0	127.0	63.5	31.8	66.8	M20 x 2.50	M12 x 1.75	14.80 (6.71)	10000 (690)
2"x1-1/4" ⁽²⁾	BTRM104-200x125-M14-*	44.5	96.8	85.9	49.3	31.8	76.2	38.1	127.0	127.0	63.5	31.8	66.8	M20 x 2.50	M14 x 2.00	14.80 (6.71)	10000 (690)
2"x1-1/2"	BTRM104-200x150-*	44.5	96.8	85.9	49.3	38.1	76.2	38.1	127.0	127.0	63.5	36.6	79.5	M20 x 2.50	M16 x 2.00	14.80 (6.71)	10000 (690)

⁽¹⁾Designates Threaded Holes for M14 bolts - special order

Ordering Example: BTRM104-200x050-SS

* Materials:

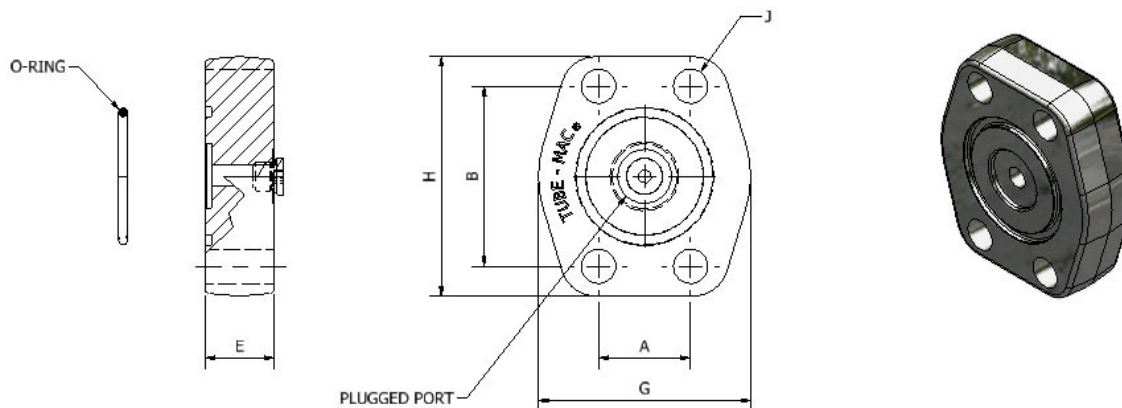
Standard, No Designation = All Carbon Steel, Zinc Nickel Plated.
SS = Stainless Steel, Type 316.

* Insert Material _____

3D step models available upon request

SAE 10000 PSI Blanking Flange O-Ring Face with Clearance Holes

SAE J518 Code 62 (ISO 6162-2) Flange Pattern



BF0104 – Blanking Flange Complete with O-Ring and #4 SAE Port (Plugged), NPS

Size	Blanking Flange Part Number	Dimensions (in)					Bolt Size J	O-Ring (Buna) Part Number	Working Pressure PSI (bar)	WT lbs (kg)
		A	B	G	H	E				
1/2"	BF0104-050-*^-^	0.72	1.59	1.88	2.22	1.20	5/16"	OR*-2-210	10000 (690)	0.90 (0.41)
3/4"	BF0104-075-*^-^	0.94	2.00	2.38	2.81	1.40	3/8"	OR*-2-214	10000 (690)	1.78 (0.81)
1"	BF0104-100-*^-^	1.09	2.25	2.75	3.19	1.40	7/16"	OR*-2-219	10000 (690)	2.11 (0.96)
1-1/4"	BF0104-125-*^-^	1.25	2.63	3.06	3.75	1.60	1/2"	OR*-2-222	10000 (690)	3.08 (1.40)
1-1/2"	BF0104-150-*^-^	1.44	3.13	3.75	4.44	1.60	5/8"	OR*-2-225	10000 (690)	5.24 (2.38)
2"	BF0104-200-*^-^	1.75	3.81	4.50	5.25	2.40	3/4"	OR*-2-228	10000 (690)	10.40 (4.73)
2-1/2"	BF0104-250-*^-^	2.31	4.87	5.90	6.89	2.40	1"	OR*-2-232	10000 (690)	19.16 (8.71)
3"	BF0104-300-*^-^	2.81	6.00	7.00	8.50	2.75	1-1/8"	OR*-2-237	10000 (690)	32.63 (14.83)

BFOM104 – Blanking Flange Complete with O-Ring and G1/8 BSPP Port (Plugged,) Metric

Size	Blanking Flange Part Number	Dimensions (mm)					Bolt Size J	O-Ring (Buna) Part Number	Working Pressure PSI (bar)	WT lbs (kg)
		A	B	G	H	E				
1/2"	BFOM104-050-*^-^	18.3	40.4	47.8	56.4	30	M8	OR*-2-210	10000 (690)	0.90 (0.41)
3/4"	BFOM104-075-*^-^	23.9	50.8	60.5	71.4	35	M10	OR*-2-214	10000 (690)	1.78 (0.81)
1"	BFOM104-100-*^-^	27.7	57.2	69.9	81.0	35	M12	OR*-2-219	10000 (690)	2.11 (0.96)
1-1/4"	BFOM104-125-*^-^	31.8	66.8	77.7	95.3	40	M12	OR*-2-222	10000 (690)	3.08 (1.40)
1-1/4" ⁽¹⁾	BFOM104-125-M14*^-^	31.8	66.8	77.7	95.3	40	M14	OR*-2-222	10000 (690)	3.08 (1.40)
1-1/2"	BFOM104-150-*^-^	36.6	79.5	95.3	112.8	40	M16	OR*-2-225	10000 (690)	5.24 (2.38)
2"	BFOM104-200-*^-^	44.5	96.8	114.3	133.4	60	M20	OR^-2-228	10000 (690)	10.40 (4.73)
2-1/2"	BFOM104-250-*^-^	58.7	123.8	150.0	175.0	60	M24	OR^-2-232	10000 (690)	19.16 (8.71)
3"	BFOM104-300-*^-^	71.4	152.4	178.0	215.0	70	M30	OR^-2-237	10000 (690)	32.63 (14.83)

⁽¹⁾ Designates Clearance Holes for M14 bolts - special order

* Materials:

Standard, No Designation = Carbon Steel, Zinc Nickel Plated.

HDG = Carbon Steel, Hot Dip Galvanized.

SS = Stainless Steel, Type 316.

^ O-Ring Type:

Standard, No Designation = Buna Nitrile.

V = Viton.

Ordering Example: BFOM104-200-SS-V

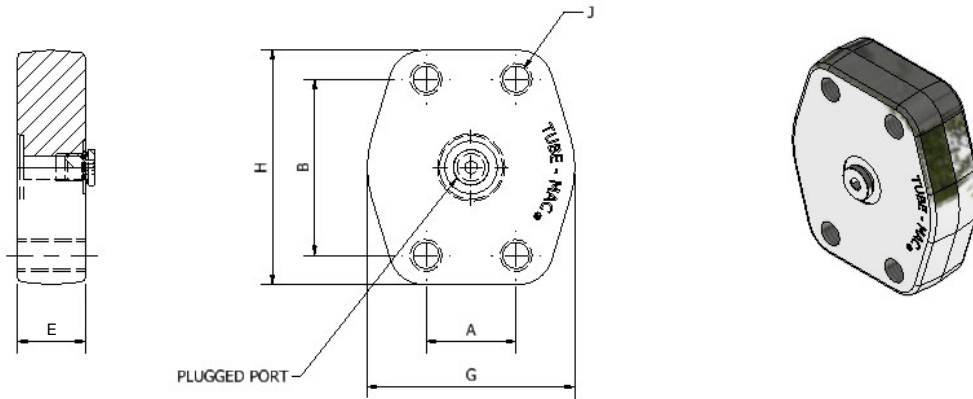
* Insert Material

^ Insert O-Ring 2 Type

SAE 10000 PSI Blanking Flange

Flat Face with Threaded Holes

SAE J518 Code 62 (ISO 6162-2) Flange Pattern



BFF104 – Blanking Flange Flat Face with #4 SAE Port (Plugged) and UNC Threaded Holes, NPS

Size	Blanking Flange Part Number	Dimensions (in)					Thread UNC-2B J	Working Pressure PSI (bar)	WT lbs (kg)
		A	B	G	H	E			
1/2"	BFF104-050-*	.72	1.59	1.88	2.22	1.20	5/16"-18	10000 (690)	0.90 (0.41)
3/4"	BFF104-075-*	.94	2.00	2.38	2.81	1.40	3/8"-16	10000 (690)	1.78 (0.81)
1"	BFF104-100-*	1.09	2.25	2.75	3.19	1.40	7/16"-14	10000 (690)	2.11 (0.96)
1-1/4"	BFF104-125-*	1.25	2.63	3.06	3.75	1.60	1/2"-13	10000 (690)	3.08 (1.40)
1-1/2"	BFF104-150-*	1.44	3.13	3.75	4.44	1.60	5/8"-11	10000 (690)	5.24 (2.38)
2"	BFF104-200-*	1.75	3.81	4.50	5.25	2.40	3/4"-10	10000 (690)	10.40 (4.73)
2-1/2"	BFF104-250-*	2.31	4.87	5.90	6.89	2.40	1"	10000 (690)	19.16 (8.71)
3"	BFF104-300-*	2.81	6.00	7.00	8.50	2.75	1-1/8"	10000 (690)	32.63 (14.83)

BFFM64 – Blanking Flange Flat Face with G1/8 BSPP Port (Plugged) and Threaded Holes, Metric

Size	Blanking Flange Part Number	Dimensions (mm)					Thread J	Working Pressure PSI (bar)	WT lbs (kg)
		A	B	G	H	E			
1/2"	BFFM104-050-*	18.3	40.4	47.8	56.4	30	M8 x 1.25	10000 (690)	0.90 (0.41)
3/4"	BFFM104-075-*	23.9	50.8	60.5	71.4	35	M10 x 1.50	10000 (690)	1.78 (0.81)
1"	BFFM104-100-*	27.7	57.2	69.9	81.0	35	M12 x 1.75	10000 (690)	2.11 (0.96)
1-1/4"	BFFM104-125-*	31.8	66.8	77.7	95.3	40	M12 x 1.75	10000 (690)	3.08 (1.40)
1-1/4" ⁽¹⁾	BFFM104-125-M14-*	31.8	66.8	77.7	95.3	40	M14 x 2.00	10000 (690)	3.08 (1.40)
1-1/2"	BFFM104-150-*	36.6	79.5	95.3	112.8	40	M16 x 2.00	10000 (690)	5.24 (2.38)
2"	BFFM104-200-*	44.5	96.8	114.3	133.4	60	M20 x 2.50	10000 (690)	10.40 (4.73)
2-1/2"	BFFM104-250-*	58.7	123.8	150.0	175.0	60	M24 x 2.50	10000 (690)	19.16 (8.71)
3"	BFFM104-300-*	71.4	152.4	178.0	215.0	70	M30 x 2.50	10000 (690)	32.63 (14.83)

⁽¹⁾ Designates Threaded Holes for M14 bolts - special order

Ordering Example: BFFM104-200-SS

* Materials:

Standard, No Designation = Carbon Steel, Zinc Nickel Plated.

HDG = Carbon Steel, Hot Dip Galvanized.

SS = Stainless Steel, Type 316.

* Insert Material

3D step models available upon request

Notes

Introduction

Technical
Data

Pipe
Selection
Guide

16 bar,
90° Flare

ANSI 150#,
300# Flare

SAE 1000,
70 bar

SAE 3000,
210 bar

SAE 6000,
420 bar

SAE 10000,
690 bar

ISO 6164,
400 bar

ISO 6164,
400 bar
F10° Flare

Clamp
Supports -
Heavy Series

Valves, Ball
and Check