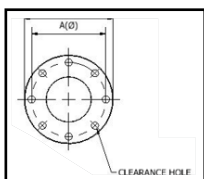


# ANSI 150# and 300# Flare Flange Reference Guide



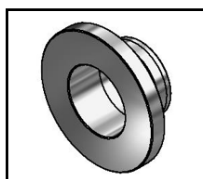
**ANSI Flare Flange  
Dimensions**

Page E1



**ANSI Flare Flange  
Clearance Holes**

**NPS only**  
FFC150, FFC300  
Page E2

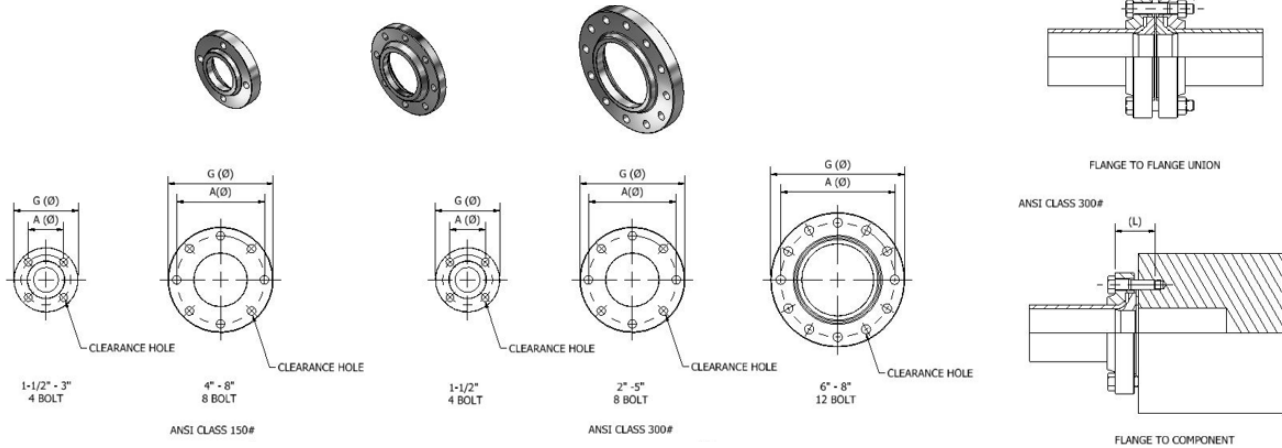


**ANSI Flare Cones**

**NPS only**  
CFPH-SCH40  
Page E3

# ANSI Flare Flange Dimensions

Flange pattern according to ANSI / ASME B16.5



## ANSI Class 150# Flare Flange Dimensions (Inches)

Size	Dimensions (in)				HEX Bolt (in)* L (L)	Number of Bolts	Working Pressure** PSI (bar)
	Bolt Circle A Ø	Outside Diameter G Ø	Flange Thickness E	Hole Diameter			
1 1/2"	3.88	5.00	1.00	0.63	1/2"-13 UNC x 3.00 (2.00)	4	285 (20)
2"	4.75	6.00	0.69	0.75	5/8"-11 UNC x 2.50 (2.00)	4	285 (20)
2 1/2"	5.50	7.00	0.88	0.75	5/8"-11 UNC x 3.00 (2.25)	4	285 (20)
3"	6.00	7.50	1.19	0.75	5/8"-11 UNC x 3.50 (2.50)	4	285 (20)
4"	7.50	9.00	0.94	0.75	5/8"-11 UNC x 3.00 (2.25)	8	285 (20)
5"	8.50	10.00	0.88	0.88	3/4"-10 UNC x 3.00 (2.25)	8	285 (20)
6"	9.50	11.00	0.94	0.88	3/4"-10 UNC x 3.25 (2.50)	8	285 (20)
8"	11.75	13.50	1.10	0.88	3/4"-10 UNC x 3.50 (2.50)	8	285 (20)

### \*Hex Bolt Specification

Carbon Steel: SAE J429 Grade 8

316 Stainless Steel: ASTM – B8M Class. 1

### Note: for 3/4" SS Bolts and larger ASTM – B8M Class. 2

\*\*The flange working pressure is the maximum pressure for flanges of classes 150 and 300 at <100° F (38° C)

## ANSI Class 300# Flare Flange Dimensions (Inches)

Size	Dimensions (in)				HEX Bolt (in)* L (L)	Number of Bolts	Working Pressure** PSI (bar)
	Bolt Circle A Ø	Outside Diameter G Ø	Flange Thickness E	Hole Diameter			
1 1/2"	4.50	6.13	1.13	0.88	3/4"-10 UNC x 3.50 (2.50)	4	740 (50)
2"	5.00	6.50	0.88	0.75	5/8"-11 UNC x 3.00 (2.25)	8	740 (50)
2 1/2"	5.88	7.50	1.00	0.88	3/4"-10 UNC x 3.25 (2.50)	8	740 (50)
3"	6.63	8.25	1.19	0.88	3/4"-10 UNC x 3.75 (2.75)	8	740 (50)
4"	7.88	10.00	1.25	0.88	3/4"-10 UNC x 3.75 (2.75)	8	740 (50)
5"	9.25	11.00	1.33	0.88	3/4"-10 UNC x 4.00 (3.00)	8	740 (50)
6"	10.63	12.50	1.38	0.88	3/4"-10 UNC x 4.00 (3.00)	12	740 (50)
8"	13.00	15.00	1.56	1.00	3/4"-10 UNC x 4.50 (3.00)	12	740 (50)

### \*Hex Bolt Specification

Carbon Steel: SAE J429 Grade 8

316 Stainless Steel: ASTM – B8M Class. 1

### Note: for 3/4" SS Bolts and larger ASTM – B8M Class. 2

\*\*The flange working pressure is the maximum pressure for flanges of classes 150 and 300 at <100° F (38° C)

3D step models available upon request

# ANSI Flare Flange with Clearance Holes

Flange pattern according to ANSI / ASME B16.5



## ANSI Class 150# Flare Flange with Clearance Holes, NPS

Size	Pipe O.D. in. (mm)	Standard Part No.	Working Pressure** PSI (bar)	WT lbs. (kg)
1 1/2"	1.900" (48.26)	FFC-150-ANSI-150	285 (20)	3.91 (1.77)
2"	2.375" (60.33)	FFC-150-ANSI-200	285 (20)	4.17 (1.89)
2 1/2"	2.875" (70.03)	FFC-150-ANSI-250	285 (20)	7.39 (3.35)
3"	3.500" (88.90)	FFC-150-ANSI-300	285 (20)	10.27 (4.66)
4"	4.500" (114.3)	FFC-150-ANSI-400	285 (20)	11.65 (5.28)
5"	5.563" (141.30)	FFC-150-ANSI-500	285 (20)	12.15 (5.51)
6"	6.625" (168.28)	FFC-150-ANSI-600	285 (20)	14.71 (6.67)
8"	8.625" (219.08)	FFC-150-ANSI-800	285 (20)	20.60 (9.34)

**\* Materials:**

- Standard, No Designation = Carbon Steel, Zinc Nickel Plated
- HDG = Carbon Steel, Hot Dip Galvanized.
- SS = Stainless Steel, Type 316.

Ordering Example: FFC-150-ANSI-250-SS

\* Insert Material \_\_\_\_\_

\*\*The flange working pressure is the maximum pressure for flanges of class 150# at <100° F (38° C)

## ANSI Class 300# Flare Flange with Clearance Holes, NPS

Size	Pipe O.D. in. (mm)	Standard Part No.	Working Pressure** PSI (bar)	WT lbs. (kg)
1 1/2"	1.900" (48.26)	FFC-300-ANSI-150	740 (50)	7.30 (3.31)
2"	2.375" (60.33)	FFC-300-ANSI-200	740 (50)	5.99 (2.72)
2 1/2"	2.875" (70.03)	FFC-300-ANSI-250	740 (50)	9.35 (4.24)
3"	3.500" (88.90)	FFC-300-ANSI-300	740 (50)	12.69 (5.76)
4"	4.500" (114.3)	FFC-300-ANSI-400	740 (50)	20.64 (9.36)
5"	5.563" (141.30)	FFC-300-ANSI-500	740 (50)	25.42 (11.53)
6"	6.625" (168.28)	FFC-300-ANSI-600	740 (50)	30.35 (13.77)
8"	8.625" (219.08)	FFC-300-ANSI-800	740 (50)	45.02 (20.42)

**\* Materials:**

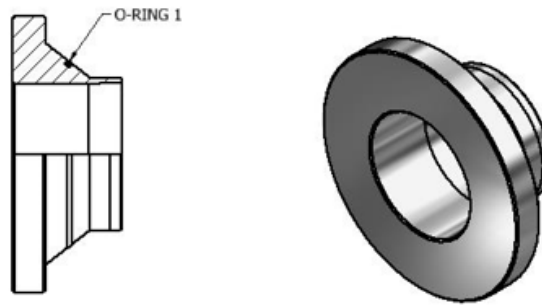
- Standard, No Designation = Carbon Steel, Zinc Nickel Plated
- HDG = Carbon Steel, Hot Dip Galvanized.
- SS = Stainless Steel, Type 316.

Ordering Example: FFC-300-ANSI-250-SS

\* Insert Material \_\_\_\_\_

\*\*The flange working pressure is the maximum pressure for flanges of class 300# at <100° F (38° C) for flanges of classes 150 and 300 at <100° F (38° C)

# ANSI Class 150# and 300# Cone Inserts for Flare Flange Connections, NPS



TYPE CFPH

## CFPH – ANSI Class 150# and 300# Cone Insert with Phonographic Face, NPS

Size	Pipe Size )	Standard Part No.	O-ring 1 Part Number	WT lbs. (kg)
1 1/2"	1-1/2" SCH40	CFPH-SCH40-150-*	OR^-4315	0.66 (0.30)
2"	2" SCH40	CFPH-SCH40-200-*	OR^-5615	0.94 (0.43)
2 1/2"	2-1/2" SCH40	CFPH-SCH40-250-*	OR^-2-036	1.52 (0.69)
3"	3" SCH40	CFPH-SCH40-300-*	OR^-2-040	2.36 (1.07)
4"	4" SCH40	CFPH-SCH40-400-*	OR^-2-044	3.37 (1.53)
5"	5" SCH40	CFPH-SCH40-500-*	OR^-2-159	4.18 (1.90)
6"	6" SCH40	CFPH-SCH40-600-*	OR^-2-163	6.80 (3.08)
8"	8" SCH40	CFPH-SCH40-800-*	OR^-2-172	10.11 (4.59)

**\* Materials:**

- Standard, No Designation = Carbon Steel, Zinc Nickel Plated
- HDG = Carbon Steel, Hot Dip Galvanized.
- SS = Stainless Steel, Type 316.

Ordering Example: CFPH-SCH40-250-SS

\* Insert Material \_\_\_\_\_



# Notes

Introduction

Technical  
Data

Pipe  
Selection  
Guide

16 bar,  
90° Flare

ANSI 150#,  
300# Flare

SAE 1000,  
70 bar

SAE 3000,  
210 bar

SAE 6000,  
420 bar

SAE 10000,  
690 bar

ISO 6164,  
400 bar

ISO 6164,  
400 bar  
F10° Flare

Clamp  
Supports -  
Heavy Series

Valves, Ball  
and Check